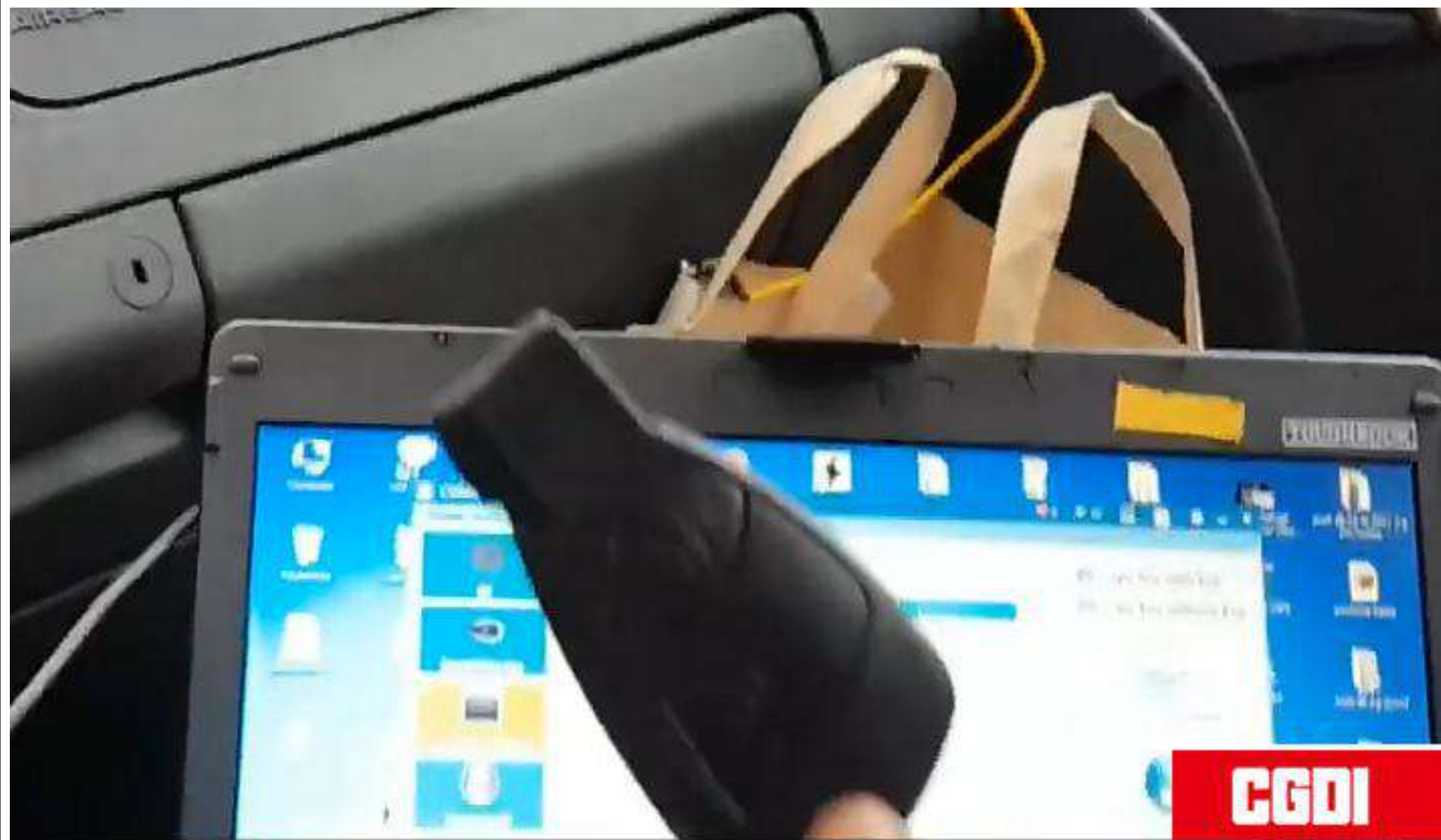




**CGDI MB Adds Old Benz Kline
W202 W208 W210 Key via OBD**

CGDI MB adds Mercedes Benz old K-line vehicle key programming.
Here's the guide on adding new keys to w202 w208 w210 kline MB
38pin car from 1997 to 1998 via OBD.(Original car key)



New key to be programmed



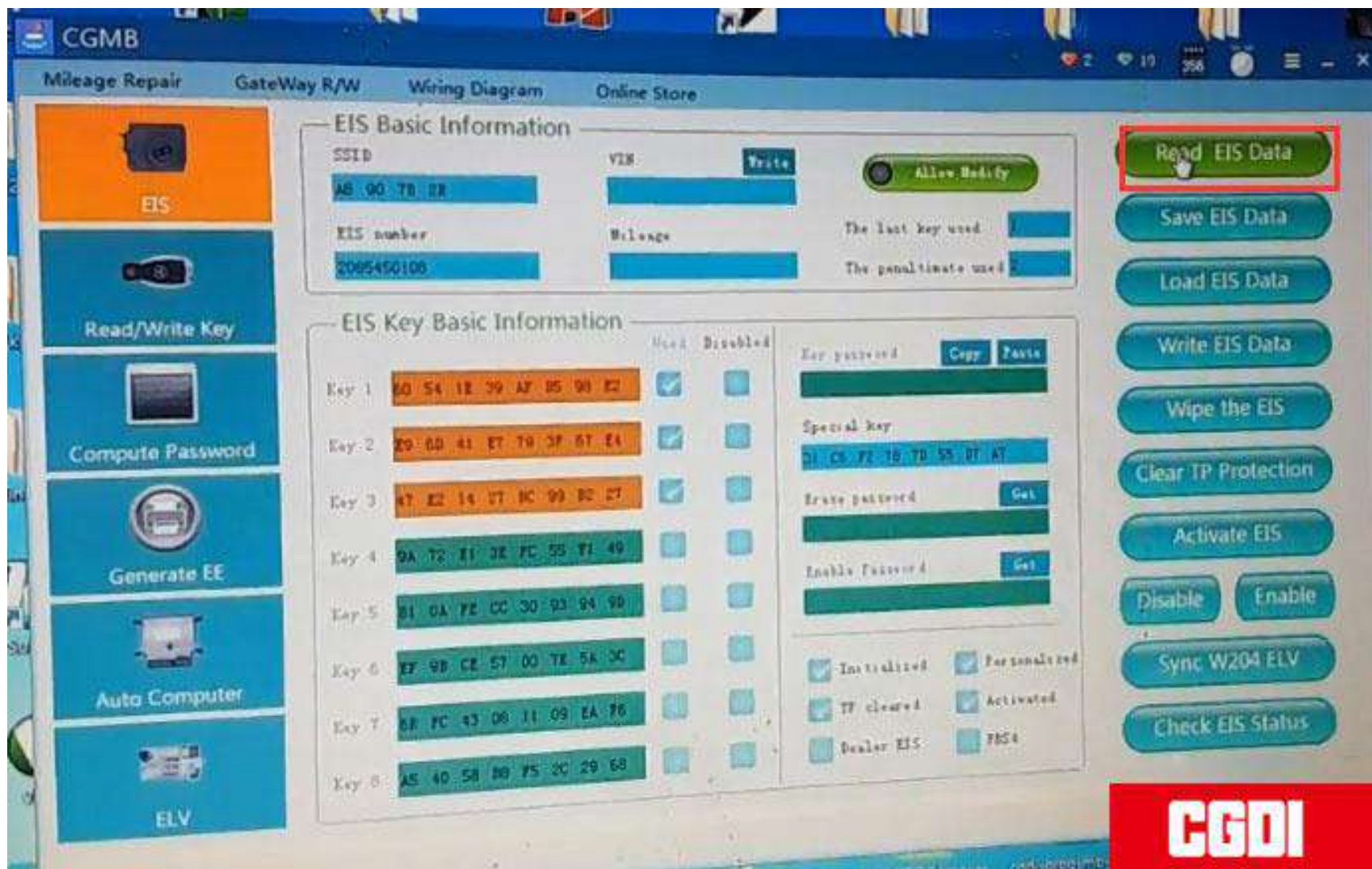
new key to be programmed

CGDI

Step 1: Calculate Password

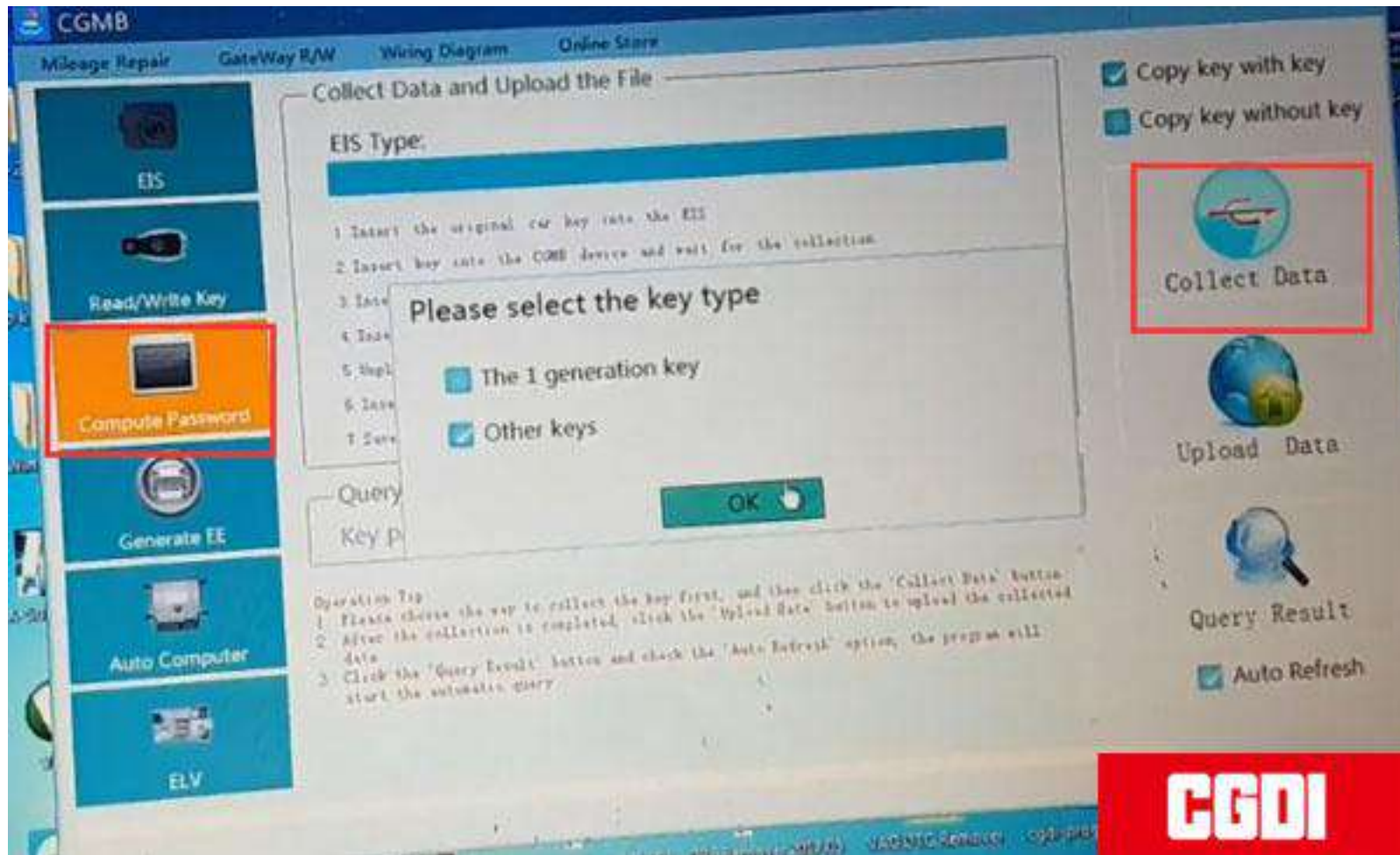
Connect CGDI Prog with laptop and vehicle

Open CGDI MB software



Go to EIS->Read EIS data

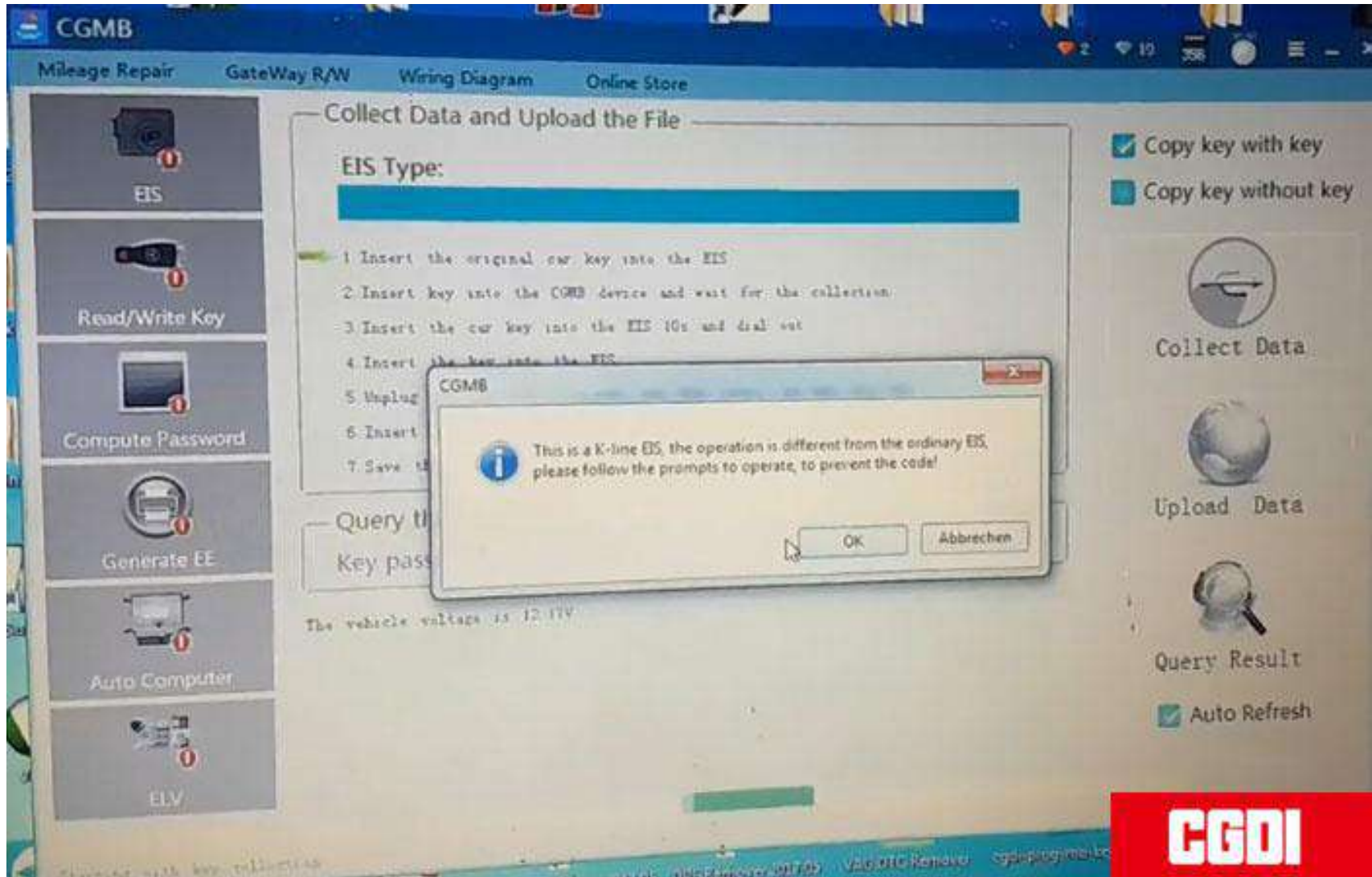
Select Computer Password-> Copy key with key-> Collect data



Follow 7 steps below to collect data

1. Insert original key into EIS and press OK

This is a k-line EIS, the operation is different from the ordinary EIS.

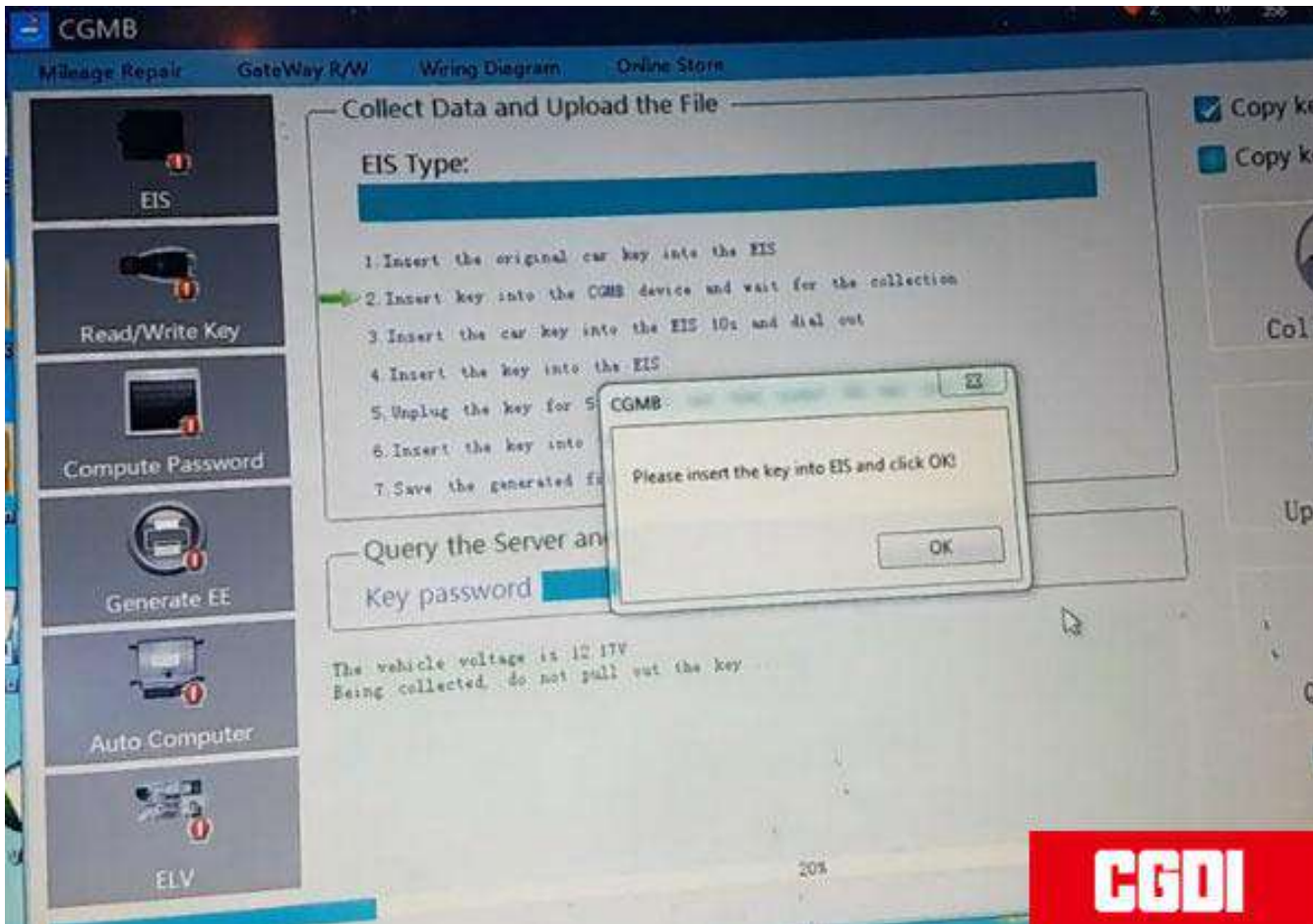


2. Insert key into CGDI MB and wait for collection

3. Insert the car key into EIS 10s and remove

Make sure to twist the key to ON position and turn on instrument. If failed to do this, pull out the key and try again. Press OK to continue.

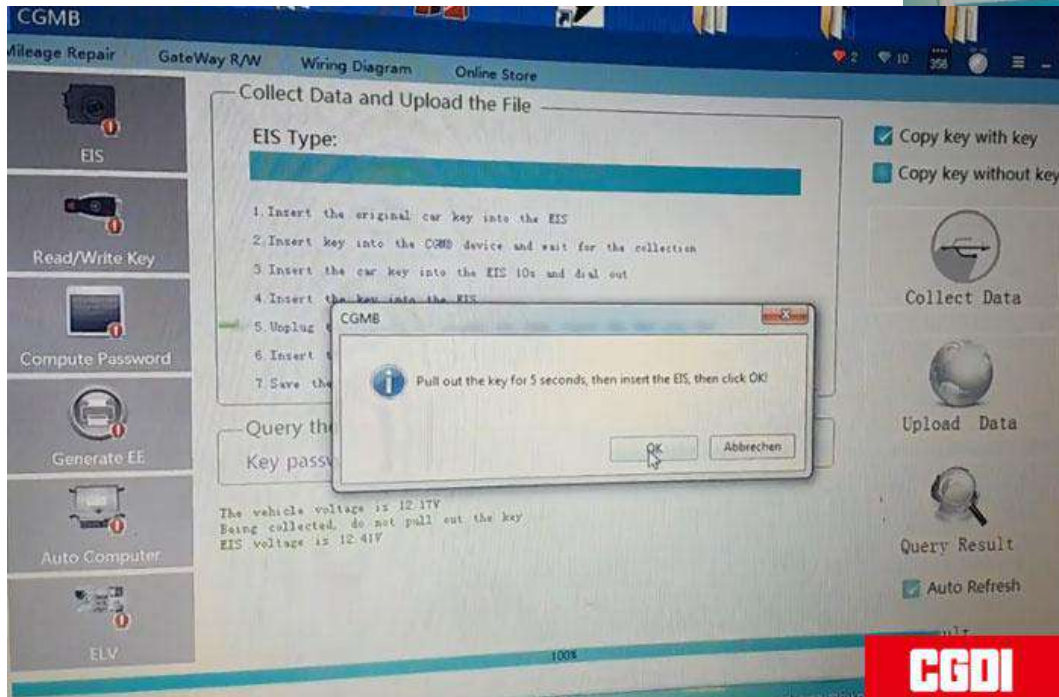
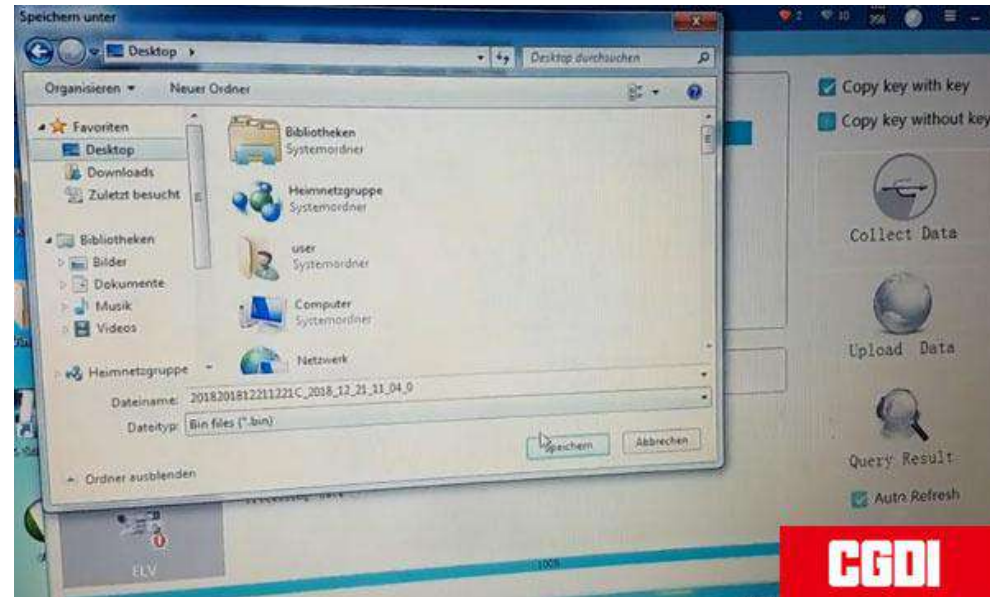
4. Insert the key into EIS



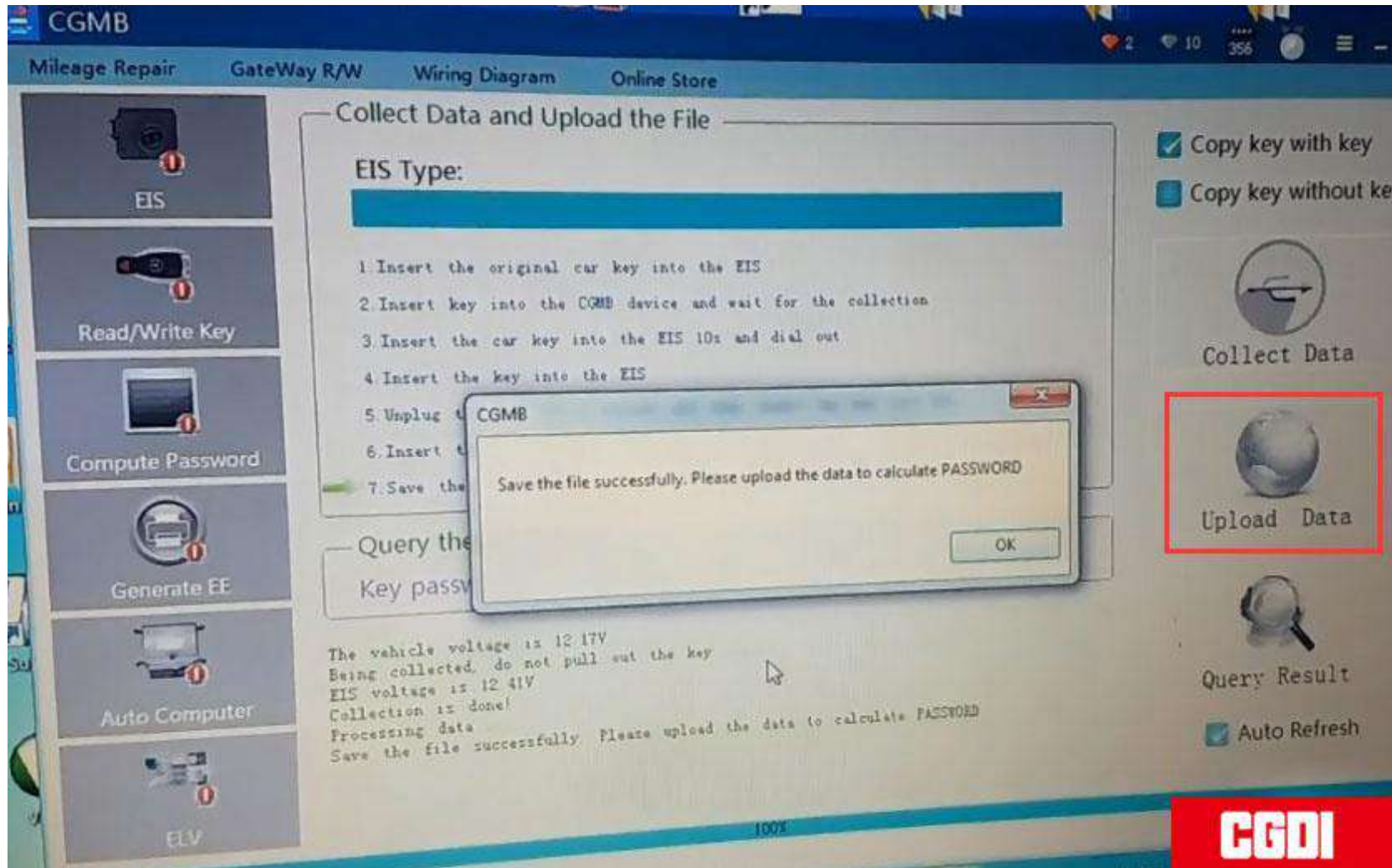
5. Remove the key for 5s and then insert the key into EIS

6. Insert the key into CGDI MB

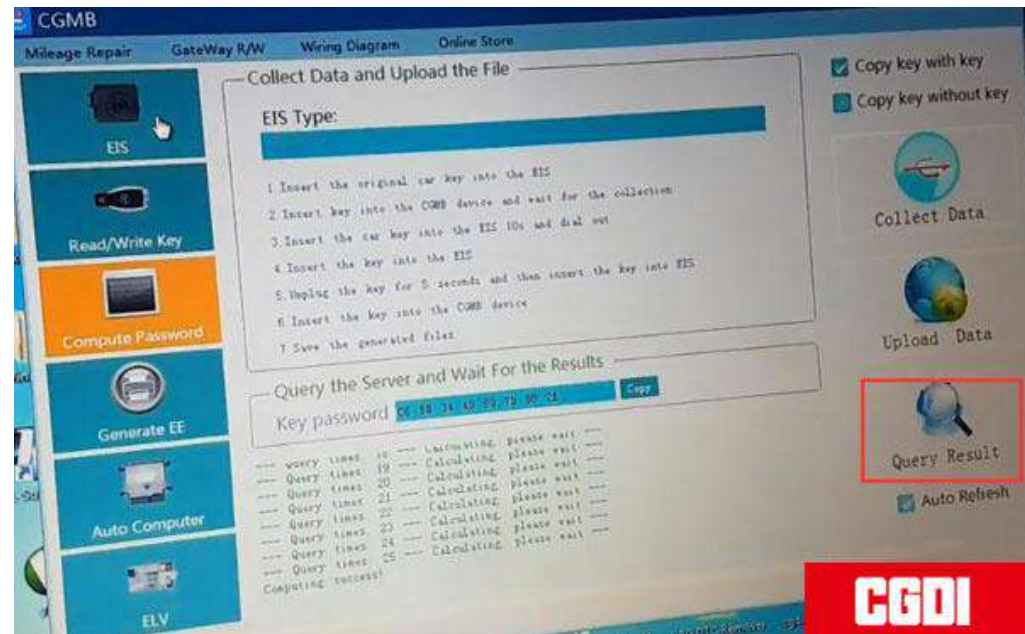
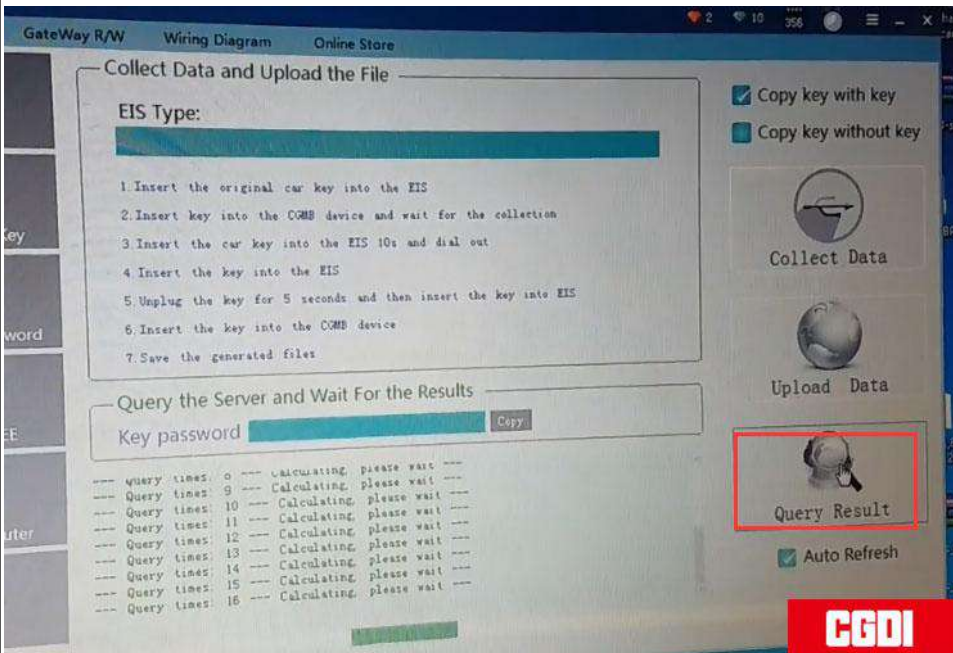
7. Save the generated files



8. Save the file successfully. Upload the data to calculate password.



Upload data successfully. Press Query Results to calculate pass--done



Copy and paste the pass to EIS Key password area and then save it

CGMB

Mileage Repair GateWay R/W Wiring Diagram Online Store

EIS Basic Information

SSID: AD 90 TD 2B VIN: [] Write Allow Modify

EIS number: 2085450100 Mileage: [] The last key used: []

The penultimate used: []

Read EIS Data

Save EIS Data

Load EIS Data

Write EIS Data

Wipe the EIS

Clear TP Protection

Activate EIS

Disable Enable

Sync W204 ELV

Check EIS Status

EIS Key Basic Information

Key	Hex Value	Used	Disabled
Key 1	80 54 1E 39 AF 05 90 E2	<input checked="" type="checkbox"/>	<input type="checkbox"/>
Key 2	29 6D 41 E7 79 3F 67 E4	<input checked="" type="checkbox"/>	<input type="checkbox"/>
Key 3	47 E2 14 27 3C 99 B2 27	<input checked="" type="checkbox"/>	<input type="checkbox"/>
Key 4	9A 72 E1 3E FC 55 F1 49	<input type="checkbox"/>	<input type="checkbox"/>
Key 5	B1 0A FE CC 3D 93 94 90	<input type="checkbox"/>	<input type="checkbox"/>
Key 6	EF 9B CE 57 D0 7E 5A 3C	<input type="checkbox"/>	<input type="checkbox"/>
Key 7	6B 7C 43 0B 11 09 EA F6	<input type="checkbox"/>	<input type="checkbox"/>
Key 8	A5 4D 58 D8 F5 2C 28 68	<input type="checkbox"/>	<input type="checkbox"/>

Key password: C6 88 34 4D 09 TD 98 2E Copy Paste

Special key: 21 0B 7C 7D 7B 85 97 47

Erase password: [] Get

Enable Password: [] Get

Initialized Personalized

TP cleared Activated

Dealer EIS FBS4

CGDI

Select Generate EE->V051-> Load EIS file

Message Repair | GateWay R/W | Wiring Diagram | Online Store

EIS

Read/Write Key

Compute Password

Generate EE

Auto Computer

ELV

Load the EIS File and Confirm the PASSWORD

SSID: [] VIN: []

Key password: []

Load EIS File

Select the Key File Format and Location to Generate

1. Select the key file format
2. Select generate key position
3. Click the [Generate Key File] button to generate

V041 V051

Key 1 Key 2 Key 3 Key 4

Key 5 Key 6 Key 7 Key 8 Select All

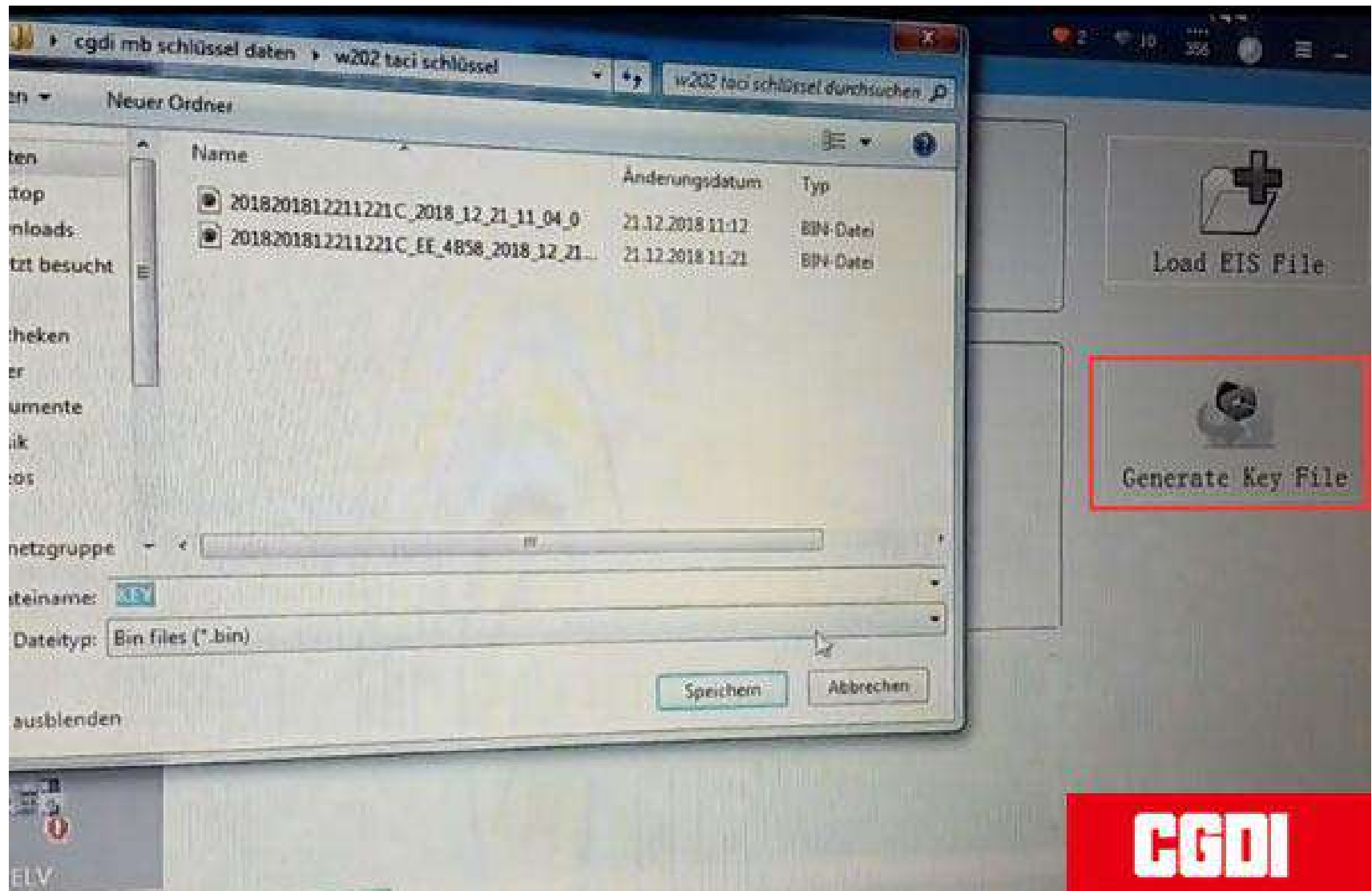
Generate Key File

Operation Tip:

1. Click the 'Load EIS File' button, check the SSID and password integrity.
2. Select the key location and key type, then click the 'Generate key file' button, waiting for the results generated.

CGDI

Upload EIS file just saved-->Press Generate Key File-->The key file was generated successfully



Go to Read/Write Key->IR ---->
read the key/chip

Mileage Repair GateWay R/W Wiring Diagram Online Store

Key Basic Information

SSID: 00 00 00 00

Position: 00

Available times: 00

State: [Active] [Reset]

Times used: 00

Version: 00

Key password: [Copy] [Paste]

Track code: [Copy]

Interface:

- Infrared
- NEC Adapter

Read Key/Chip

Reset

Open/Write

Current Hash

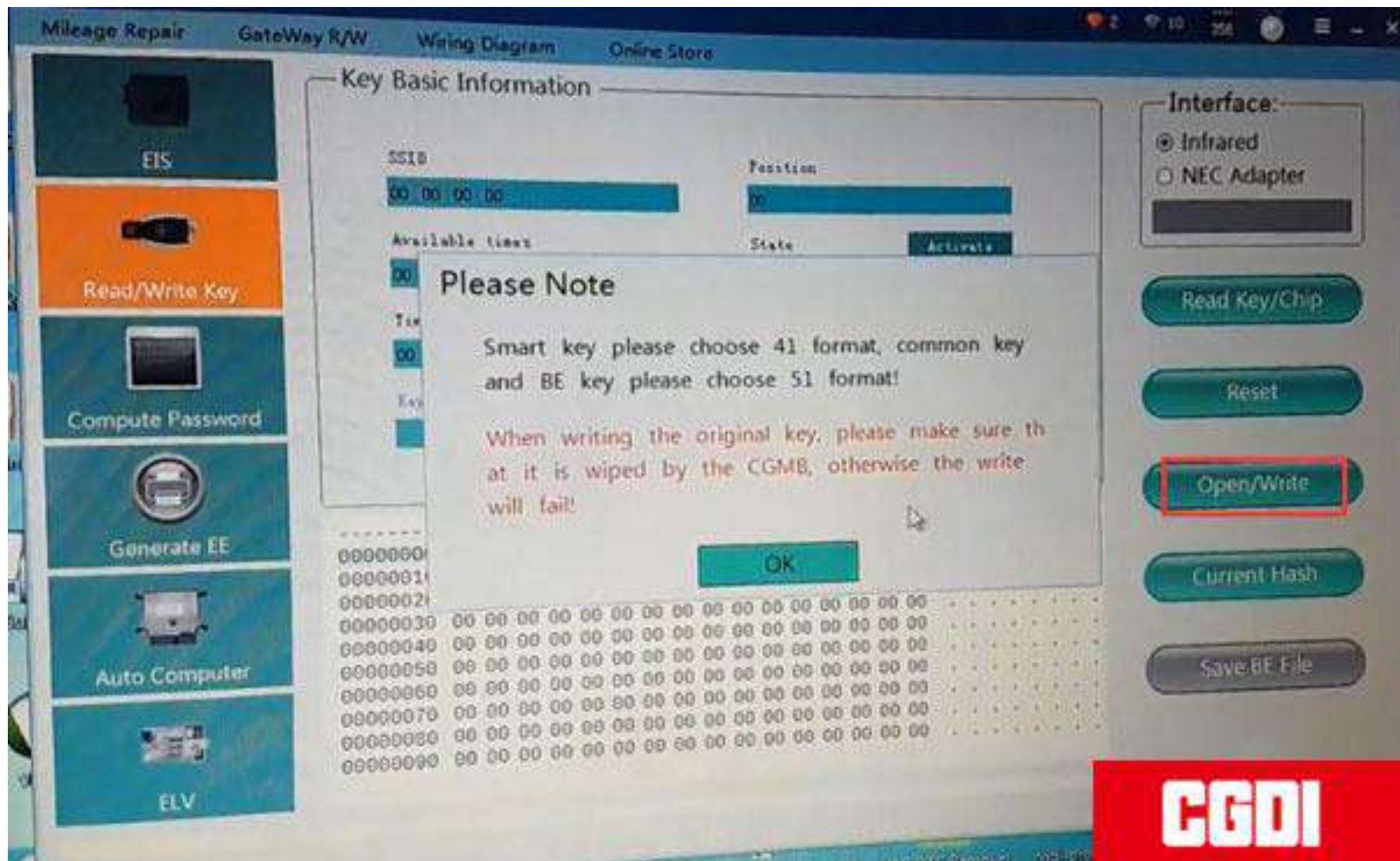
Save BE File

----- [0][1][2][3][4][5][6][7][8][9][A][B][C][D][E][F] 0 1 2 3 4 5 6 7

```
00000000 00 00 00 00 00 00 00 00 00 00 00 00 00 00 00 00
00000010 00 00 00 00 00 00 00 00 00 00 00 00 00 00 00
00000020 00 00 00 00 00 00 00 00 00 00 00 00 00 00 00
00000030 00 00 00 00 00 00 00 00 00 00 00 00 00 00 00
00000040 00 00 00 00 00 00 00 00 00 00 00 00 00 00 00
00000050 00 00 00 00 00 00 00 00 00 00 00 00 00 00 00
00000060 00 00 00 00 00 00 00 00 00 00 00 00 00 00 00
00000070 00 00 00 00 00 00 00 00 00 00 00 00 00 00 00
00000080 00 00 00 00 00 00 00 00 00 00 00 00 00 00 00
00000090 00 00 00 00 00 00 00 00 00 00 00 00 00 00 00
```

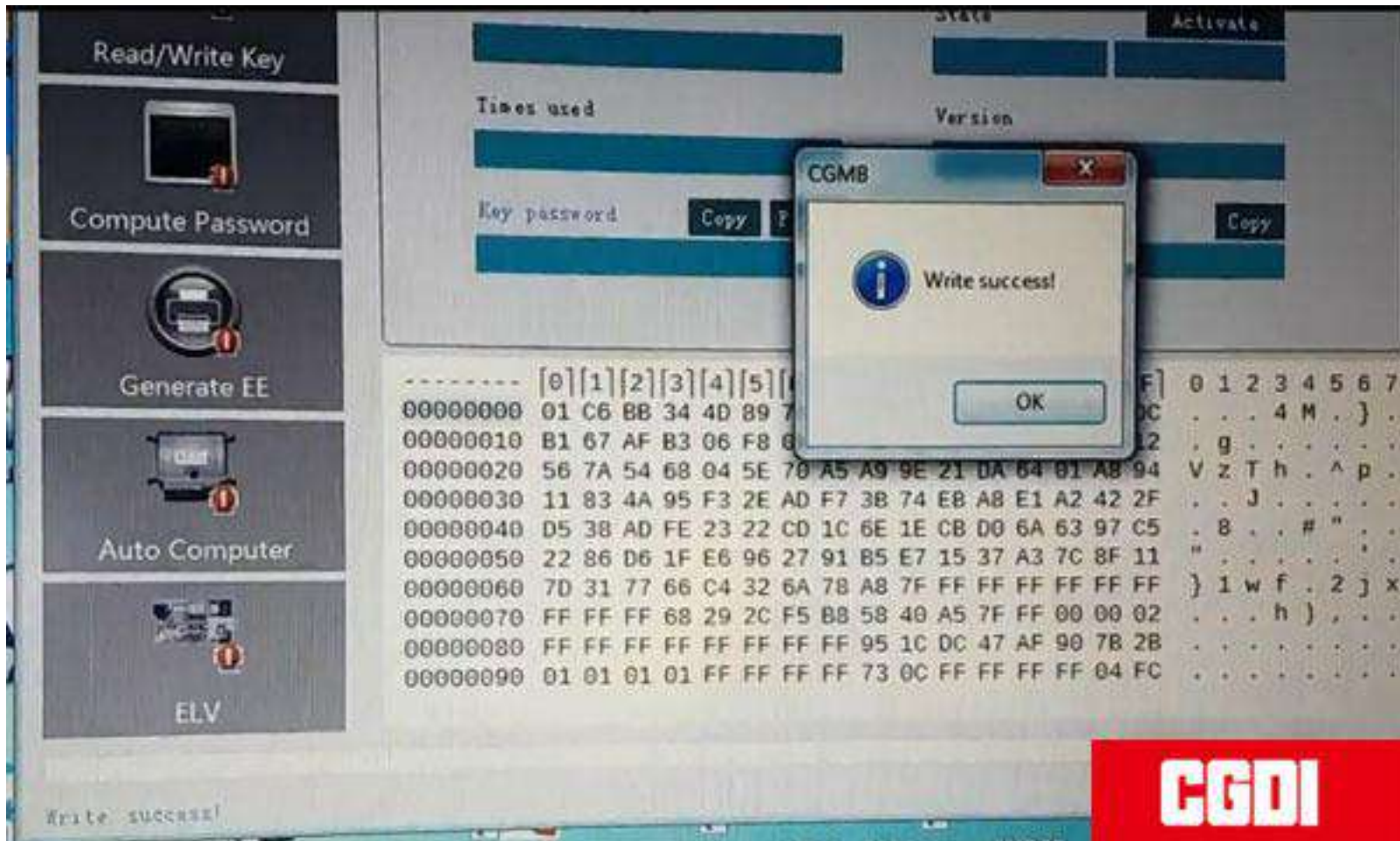
CGDI

Then Open/Write



Smart key choose 41 format, common key and BE key cchoose 51 format.

Select a key file and write it.



Write key success.



Test the new key. Works good.

Done!