

# FORD KM Tool (CAN BUS) User Manual



## Table of Contents

1. Safety Precautions and Warnings .....	3
2. General Information.....	4
3. Hardware Overview .....	5
3.1. Tool Description .....	5
3.2. Specifications.....	6
3.3. System Requirements .....	7
4. Software Overview .....	8
4.1. Overview .....	8
4.2. Function .....	9
4.3. About .....	12
5. Troubleshooting .....	14
5.1. "Device not connected"Error .....	14
6. Warranty and Service .....	15
6.1. Limited One Year Warranty .....	15
6.2. Service Procedures .....	15

# 1. Safety Precautions and Warnings

To prevent personal injury or damage to vehicles and/or the tool, read this instruction manual first and observe the following safety precautions at a minimum whenever working on a vehicle:

- Always perform automotive testing in a safe environment.
- Wear safety eye protection that meets ANSI standards.
- Keep clothing, hair, hands, tools, test equipment, etc. away from all moving or hot engine parts.
- Operate the vehicle in a well ventilated work area: Exhaust gases are poisonous.
- Put blocks in front of the drive wheels and never leave the vehicle unattended while running tests.
- Use extreme caution when working around the ignition coil, distributor cap, ignition wires and spark plugs. These components create hazardous voltages when the engine is running.
- Put the transmission in PARK (for automatic transmission) or NEUTRAL (for manual transmission) and make sure the parking brake is engaged.
- Keep a fire extinguisher suitable for gasoline/chemical/electrical fires nearby.
- Don't connect or disconnect any test equipment while the ignition is on or the engine is running.
- Keep the tool dry, clean, free from oil/water or grease. Use a mild detergent on a clean cloth to clean the outside of the scan tool, when necessary.

## 2. General Information

**Thank you for choosing FORD KM Tool (CAN BUS).**

This manual includes the use of equipment notes, please read this manual carefully before use so that you can correctly use it.

### **X-Horse Electronics, 2011**

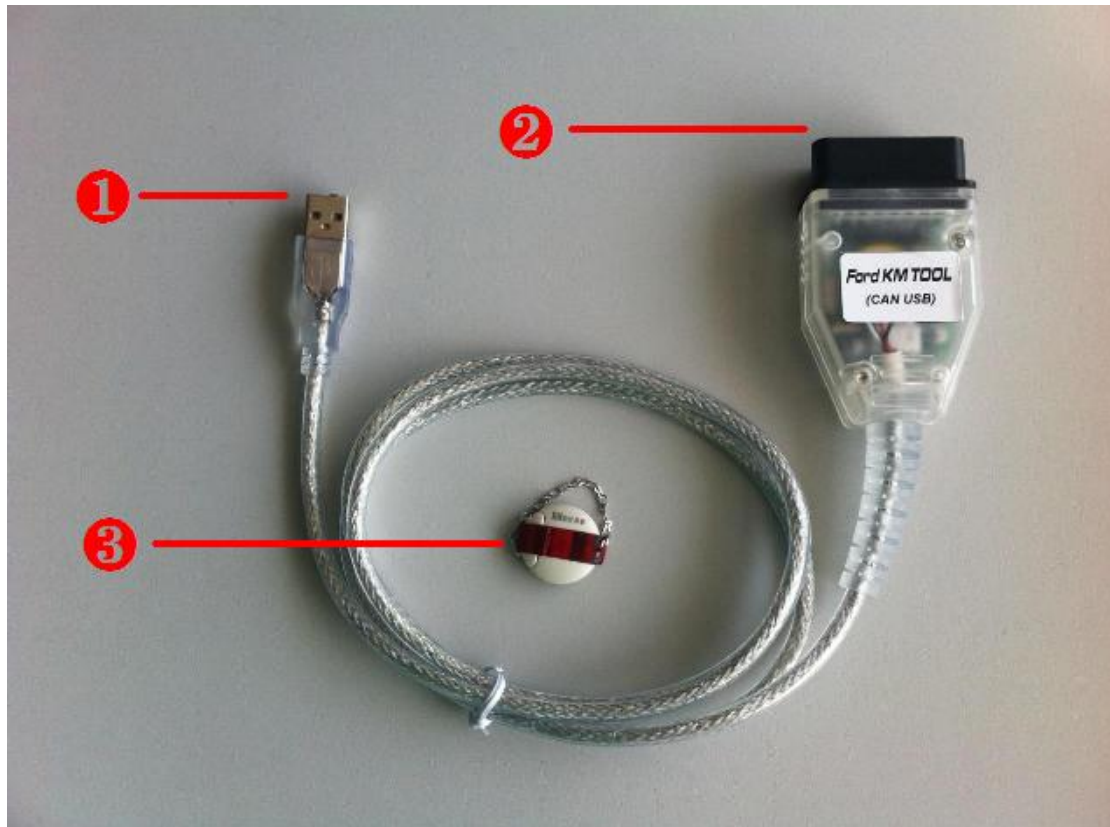
All rights reserved. No part of this publication may be reproduced, stored in a retrieval system, or transmitted, in any form, or by any means, mechanical, electronic, photocopying, recording, or otherwise, without the prior written permission of X-Horse Electronics.

All copyright and trademarks acknowledged.

No patent liability is assumed with respect to the use of the information contained herein. Moreover, because X-Horse Electronics is constantly striving to improve its high-quality products, the information contained in this manual is subject to change without notice. Every precaution has been taken in the preparation of this manual. Nevertheless, X-Horse Electronics assumes no responsibility for errors or omissions. Neither is any liability assumed for damages resulting from the use of the information contained in this publication.

## 3. Hardware Overview

### 3.1. Tool Description



ITEM	Description
①	<b>USB CONNECTOR</b> Connects the tool to the PC/Laptop through USB Cable.
②	<b>OBD II CONNECTOR</b> Connects the tool to the vehicle's Data Link connector (DLC).
③	<b>Dongle</b> USB dongle.

### 3.2. Specifications

ITEM	Description						
Operating Temperature	-20 to 70 °C ( -4 to 158 °F )						
Storage Temperature	-40 to 85 °C ( -40 to 185 °F )						
Diagnostic Interface	16 PIN						
USB Interface	USB 2.0						
Power	DC 5 V - 12 V						
Consumption	0.25 W						
Dimensions	<table><thead><tr><th>Length</th><th>Width</th><th>Height</th></tr></thead><tbody><tr><td>78 mm(3.07")</td><td>44 mm(1.73")</td><td>22 mm(0.86")</td></tr></tbody></table>	Length	Width	Height	78 mm(3.07")	44 mm(1.73")	22 mm(0.86")
Length	Width	Height					
78 mm(3.07")	44 mm(1.73")	22 mm(0.86")					
Net Weight	89 g						
Gross Weight	176 g						

### 3.3. System Requirements

#### PC/Laptop Minimum Specification

	Minimum Specification	Recommended Specification
<b>CPU</b>	Pentium 3/1GHz or above	Pentium 4/1.6GHz or above
<b>Memory(RAM)</b>	512M or above	1G or above
<b>HDD</b>	40G or above	60G or above
<b>Display</b>	800 x 600 or above	1024 x 768 or above
<b>OS</b>	Win98/2000/XP/Vista	WinXP
<b>Port</b>	USB	USB

## 4. Software Overview



### 4.1. Overview

Ford KM Tool(CAN BUS) includes 3 parts: OBDII Device, sense dongle, software.

**OBDII device:** it should connect car and computer.

**Sense dongle:** it must connect to computer while the software is running.

**Software:** First choose car type, then you can use Read KM to get the old KM. Also you can use Write KM to change KM in car.



## 4.2. Function

**Read KM:** Read KM from car

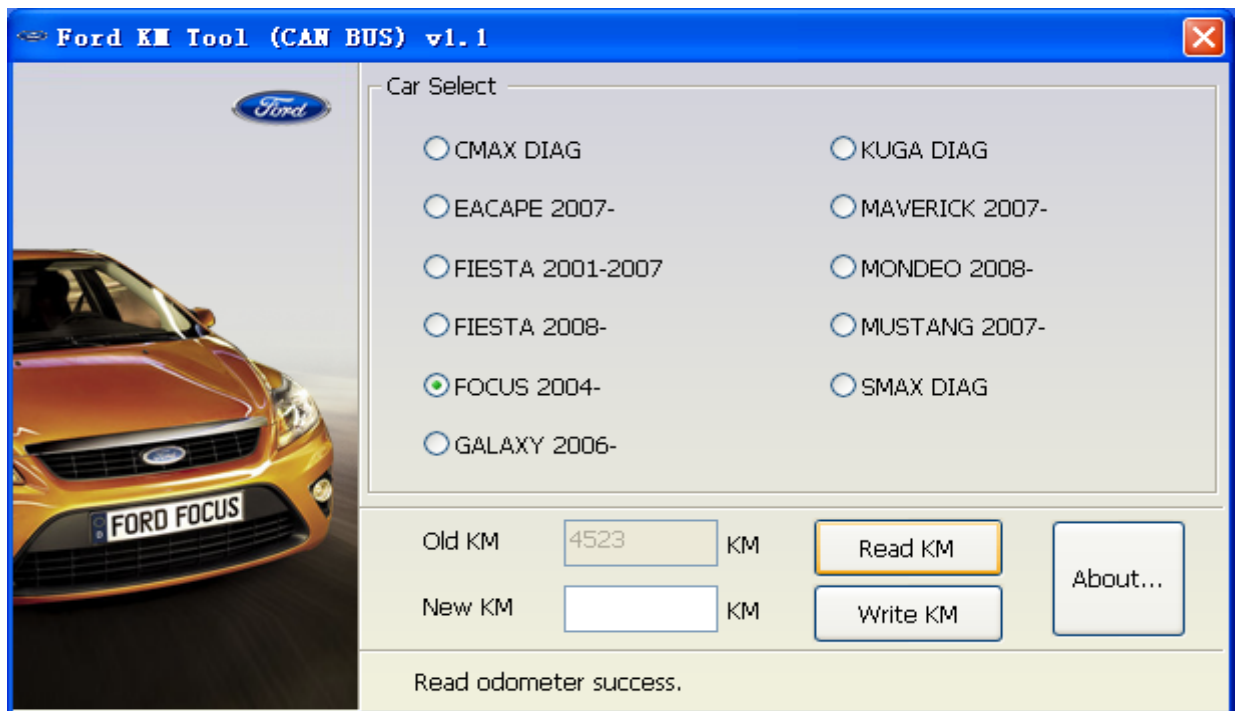
**Write KM:** Write new KM into car.

**About...:** The support instrument dash num, device info, newest version, update etc. All info can be get from here.

### 1) While the KM is reading:



2) After reading success.



3) While Writing KM

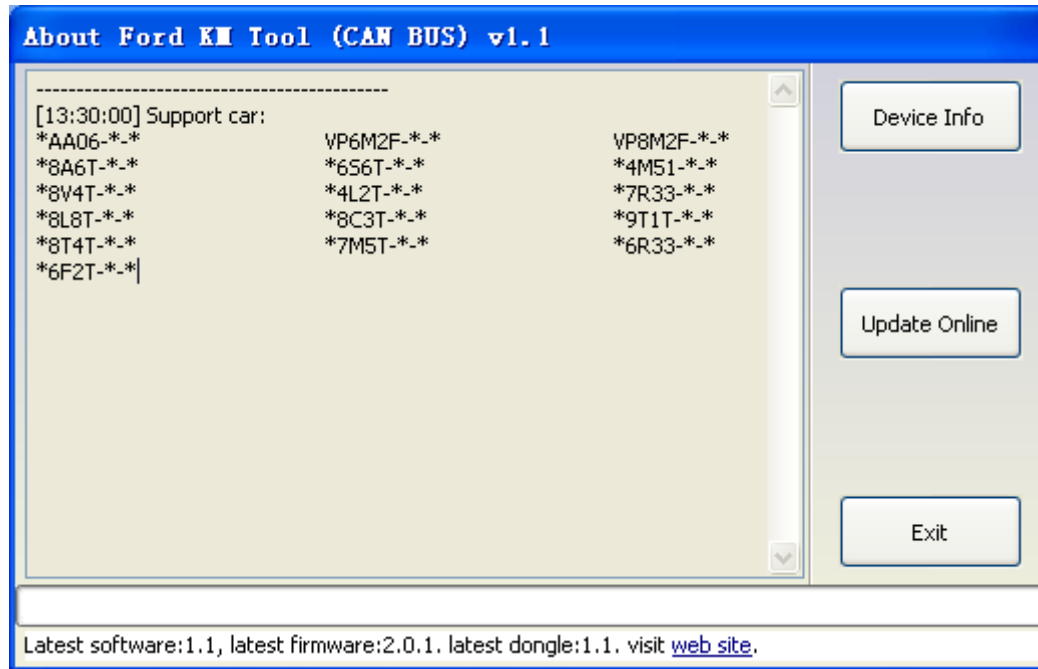


#### 4) After Written KM success.



While change KM, just follow the tips give in software bottom.  
You can try some times if Write KM failed.

### 4.3. About

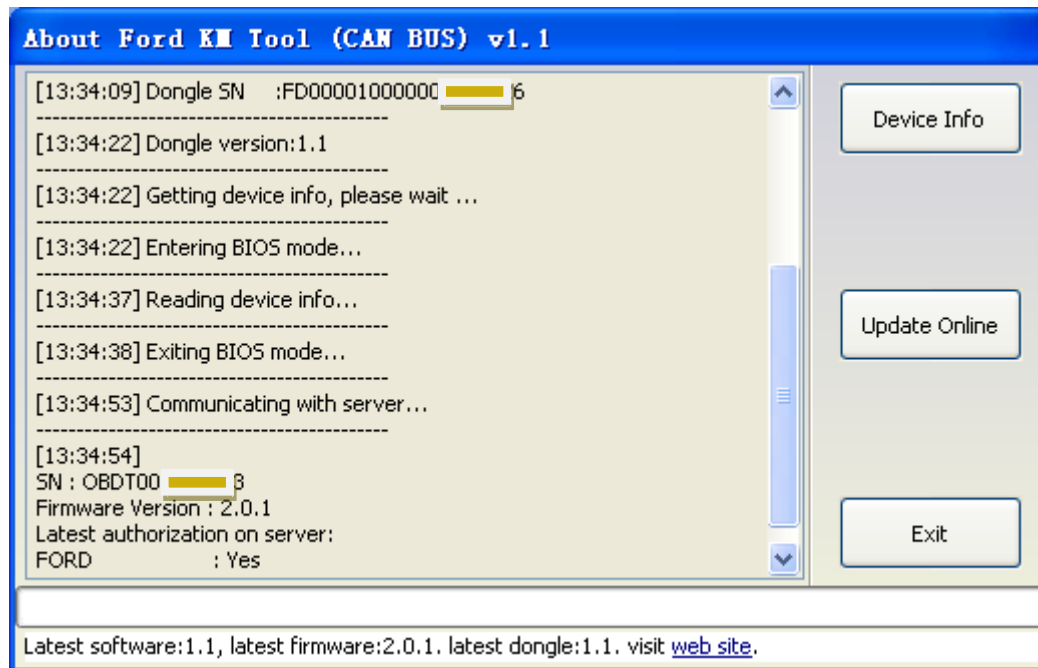


#### 1) Support instrument dash:

*AA06-*	VP6M2F-*	VP8M2F-*	*8A6T-*	*6S6T-*
*4M51-*	*8V4T-*	*4L2T-*	*7R33-*	*8L8T-*
*8C3T-*	*9T1T-*	*8T4T-*	*7M5T-*	*6R33-*
*6F2T-*				

## 2) Device Info:

From here you can get you Dongle ID, dongle version, device ID, device version.



## 3) Update Online:

You must connect to internet for update. First you can find the newest version from the bottom. Then you can get you dongle version and device version with button Device Info. You can update your device and dongle if you find new version. For software you can download from our web site.

Warning: While updating dongle and device, please don't stop the update process. After update you must reconnect the device. Dongle doesn't need.

## 5. Troubleshooting

### 5.1. “Device not connected” Error



**Information:** Hardware not connected to PC with USB port.

**Solution:** Plug device to USB.

## 6. Warranty and Service

### 6.1. Limited One Year Warranty

X-Horse warrants to its customers that this product will be free from all defects in materials and workmanship for a period of one(1) year from the date of the original purchase, subject to the following terms and conditions:

- This warranty does not apply to damages caused by improper use, accident, flood, lightning, or if the product was altered or repaired by anyone other than the Manufacturer's Service Center.
- X-Horse shall not be liable for any incidental or consequential damages arising from the use, misuse, or mounting of the tool. Some states do not allow limitations on how long an implied warranty lasts, so the above limitations may not apply to you.
- All information in this manual is based on the latest information available at the time of publication and no warranty can be made for its accuracy or completeness. X-Horse reserves the right to make changes at any time without notice.

### 6.2. Service Procedures

If you have any questions, please post at <http://www.x-horses.com/forum/>