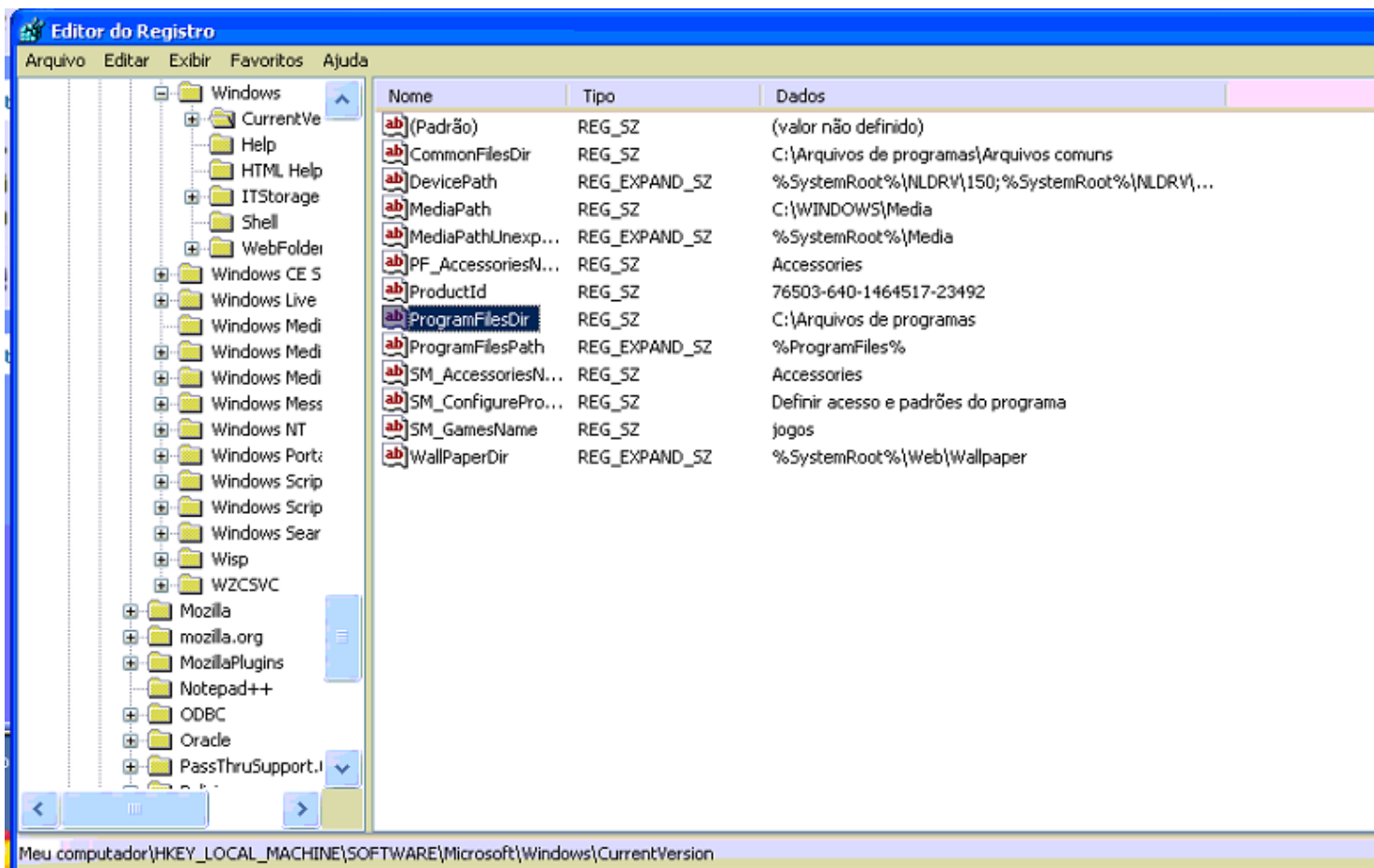


Instruction of JLR default installation path changing on Spanish customers

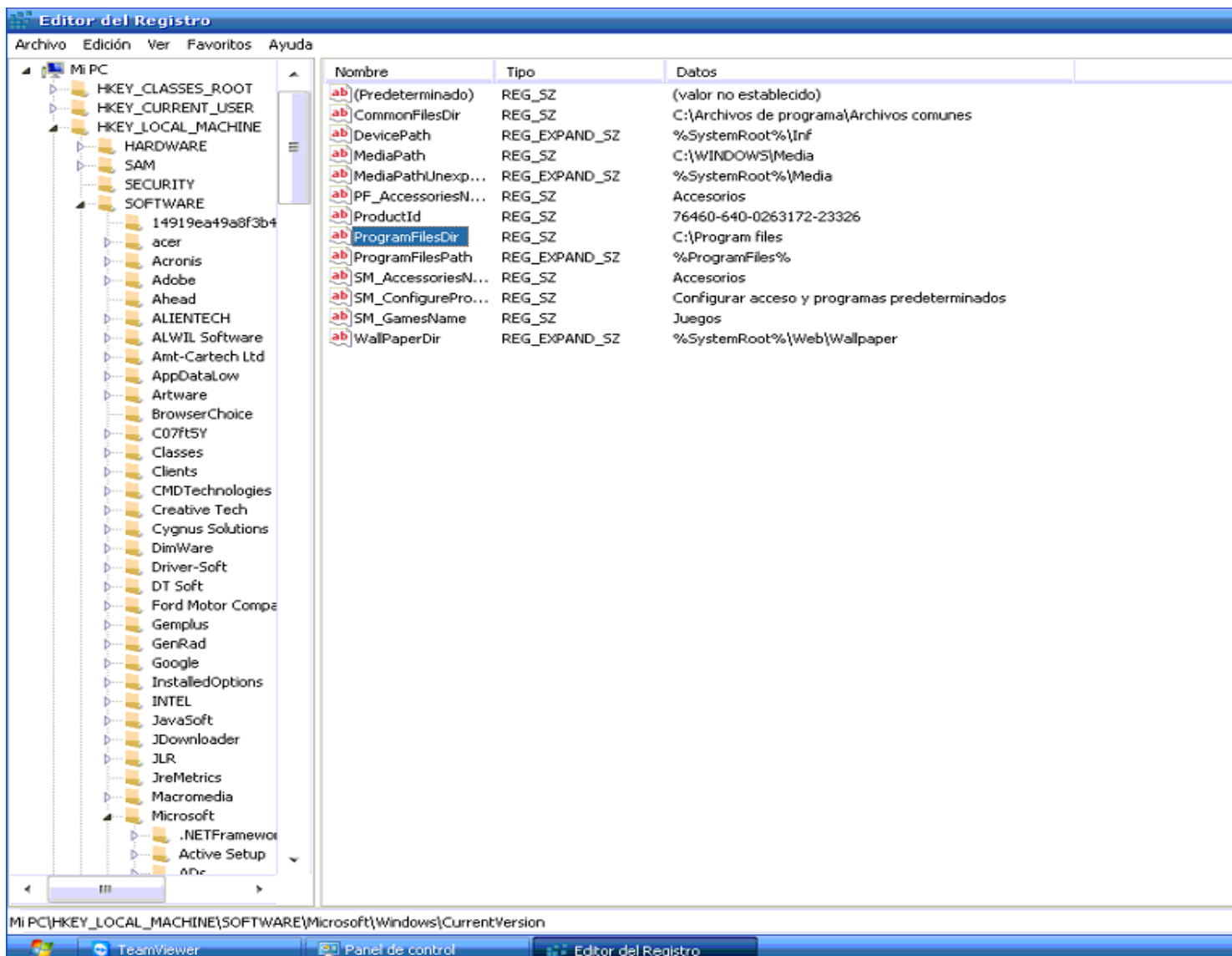
2011-10-13

When you install JLR software on the computer with a Spanish system, you must change the default installation path of the software first, and then can install the JLR software. The detail way to change the path as below:

First input Regedit to “star-run” to open Registry Editor, unfold registry to the follow branch: HKEY_LOCAL_MACHINE \ SOFTWARE \ Microsoft \ Windows \ CurrentVersion. Then find words like “ProgramFilesDir”, it records the path of ProgramFiles, click twice to change “C: \ Archivos de programa” into “C: \ ProgramFiles”, then confirm it, finish confirmation then exit registry. After complete those work, the changing works!



Spanish default installation path before change



Spanish default installation path after change

The default installation path of any version is not “C: \ProgramFiles”, like Italian, Portuguese and ect, you must change the default path first then can install your software.