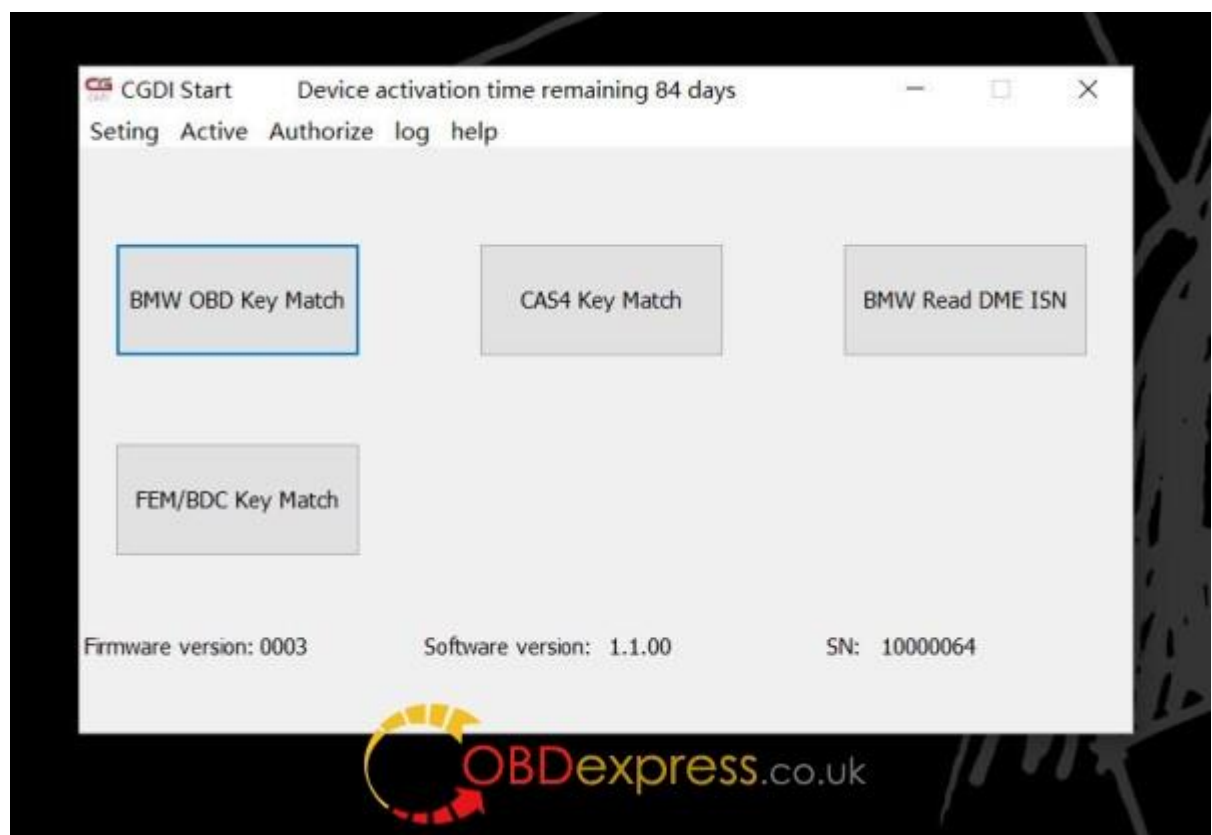


How to use CGDI Prog BMW to program FEM key

www.obdexpress.co.uk

This file is about how to use [CGDI Prog BMW](#) to program FEM key

Go to BMW Key Match



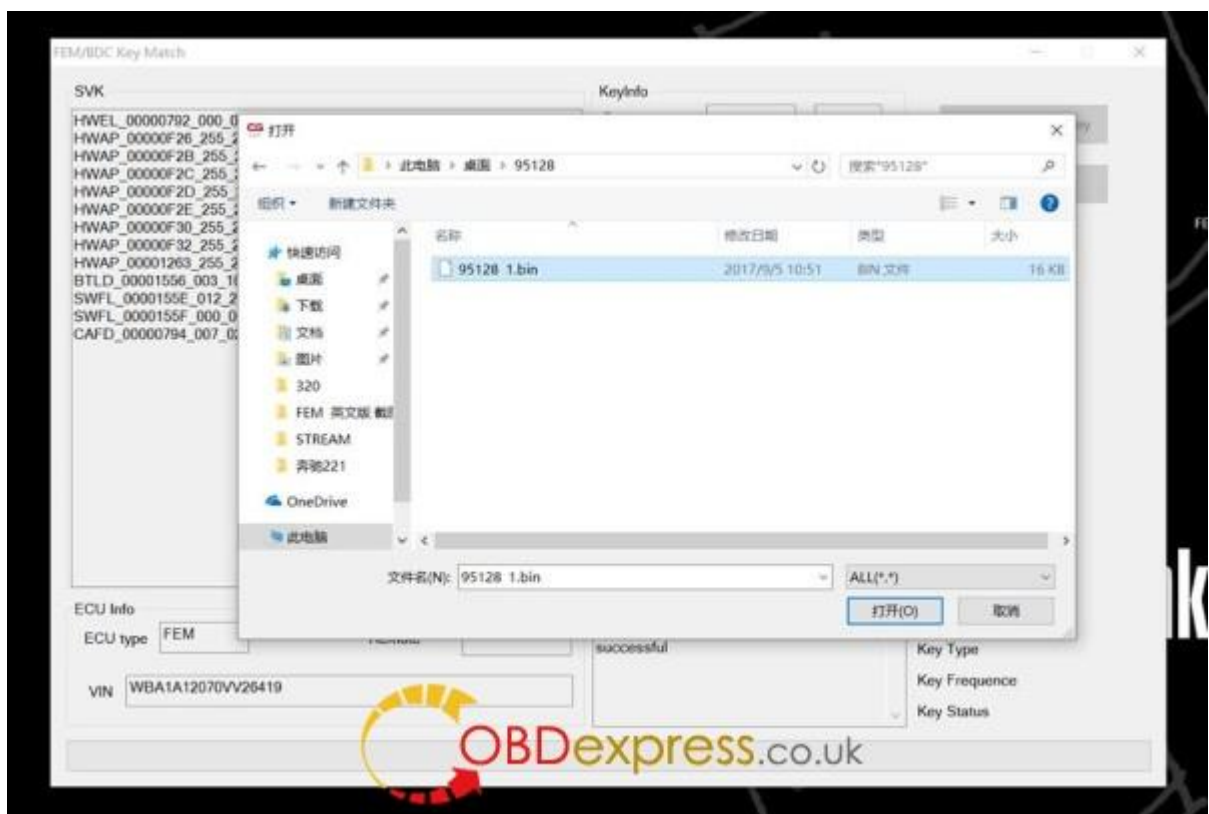
The current FEM/BDC needs to update the ECU program before performing key matching. Please ensure that the car battery has enough power, the programming process, please keep the equipment cable connection

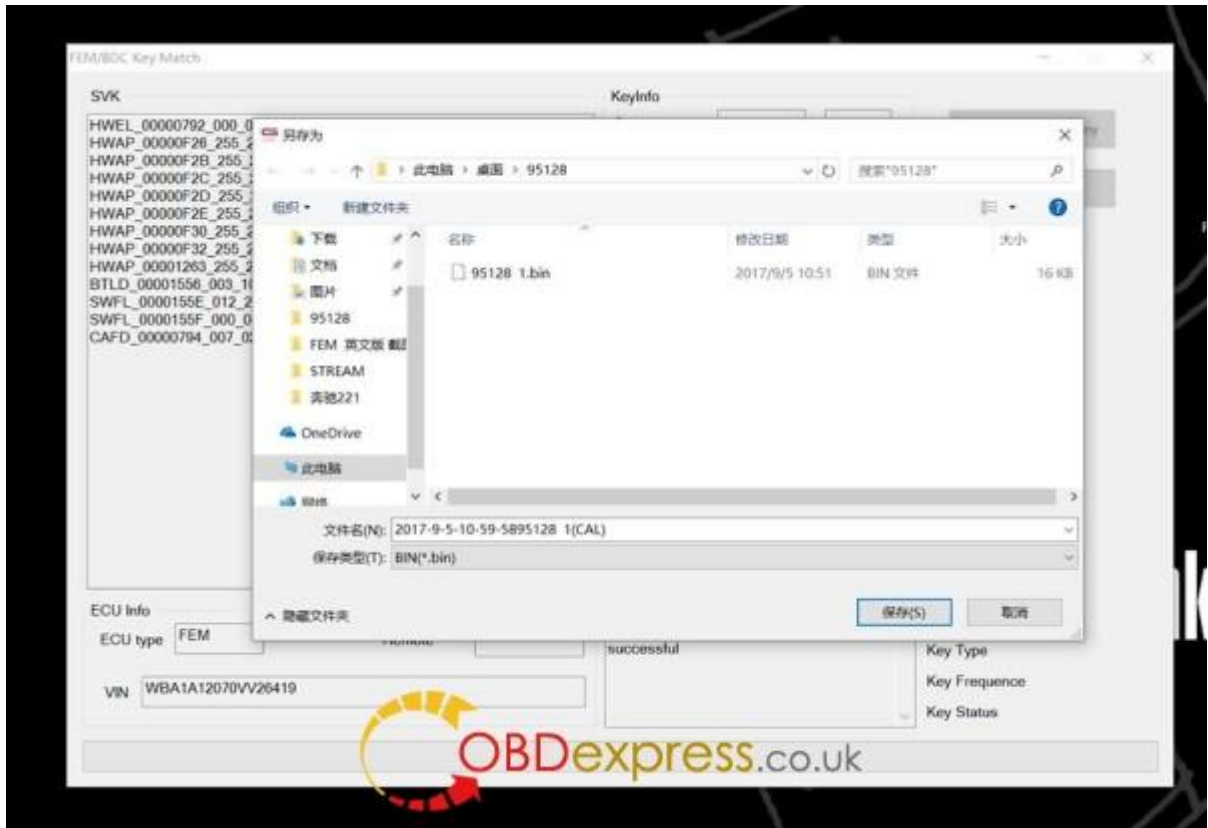


Please remove the FEM/BDC and then use the CGDI Prog programmer to read and save data from the P5XXX EEPROM chip on the FEM/BDC computer board, then click on Next



Read the original car EEPROM data file





Use the CGDI Prog BMW to write the calculated new data to the 95XXX EEPROM chip, then put the FEM/BDC back into the car, then click on Next



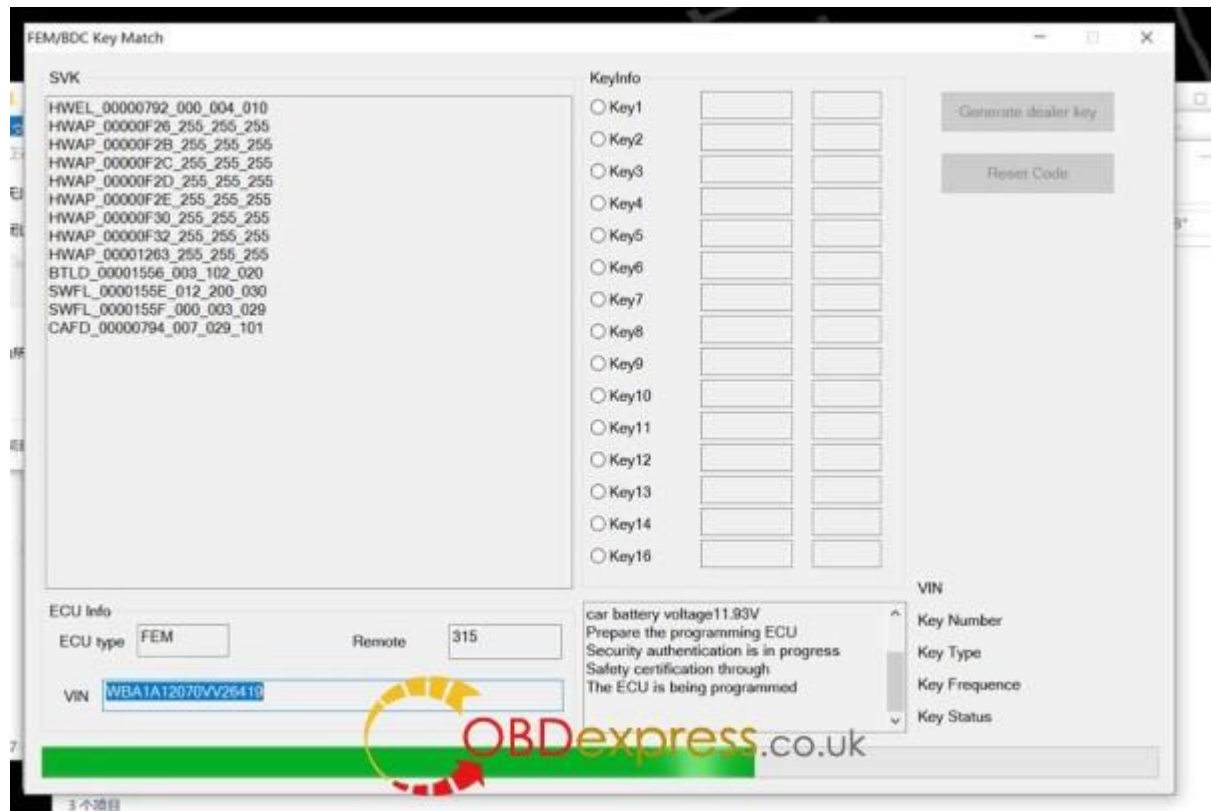
Car battery voltage: 11.93V

Prepare the programming ECU

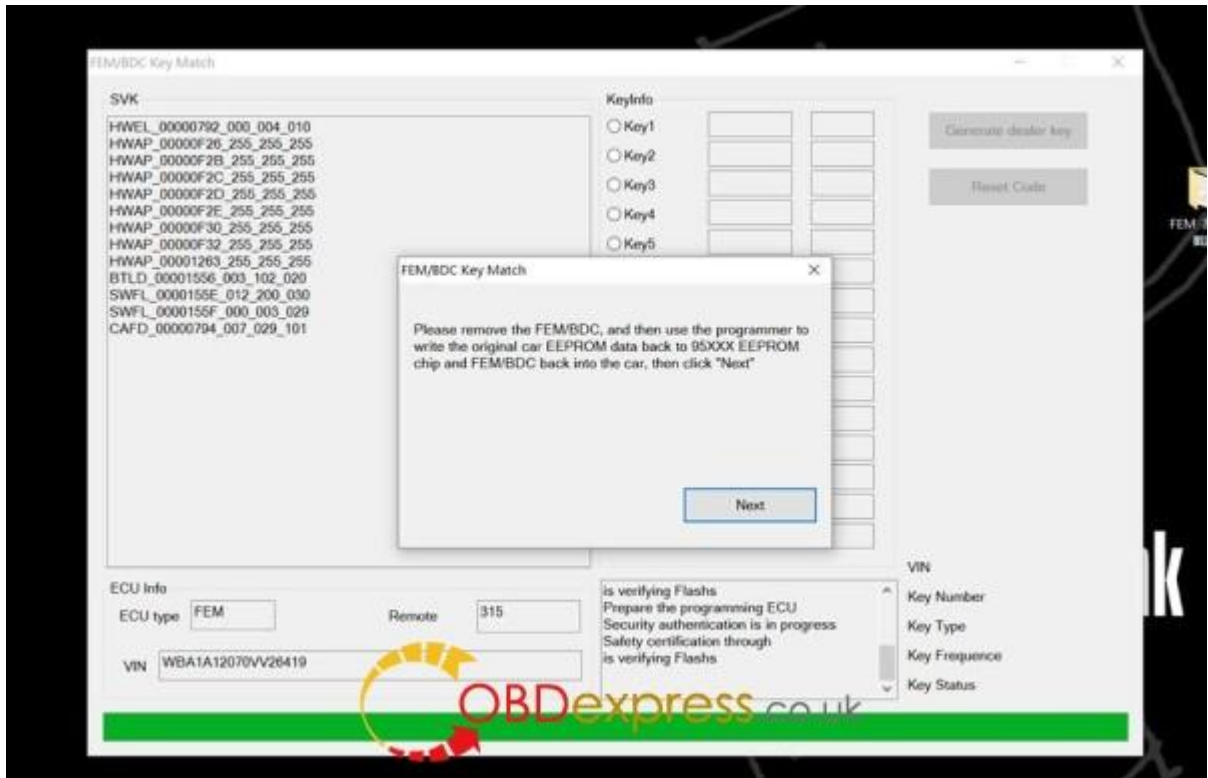
Security authentication is in progress

Safety certification through

The ECU is being programmed

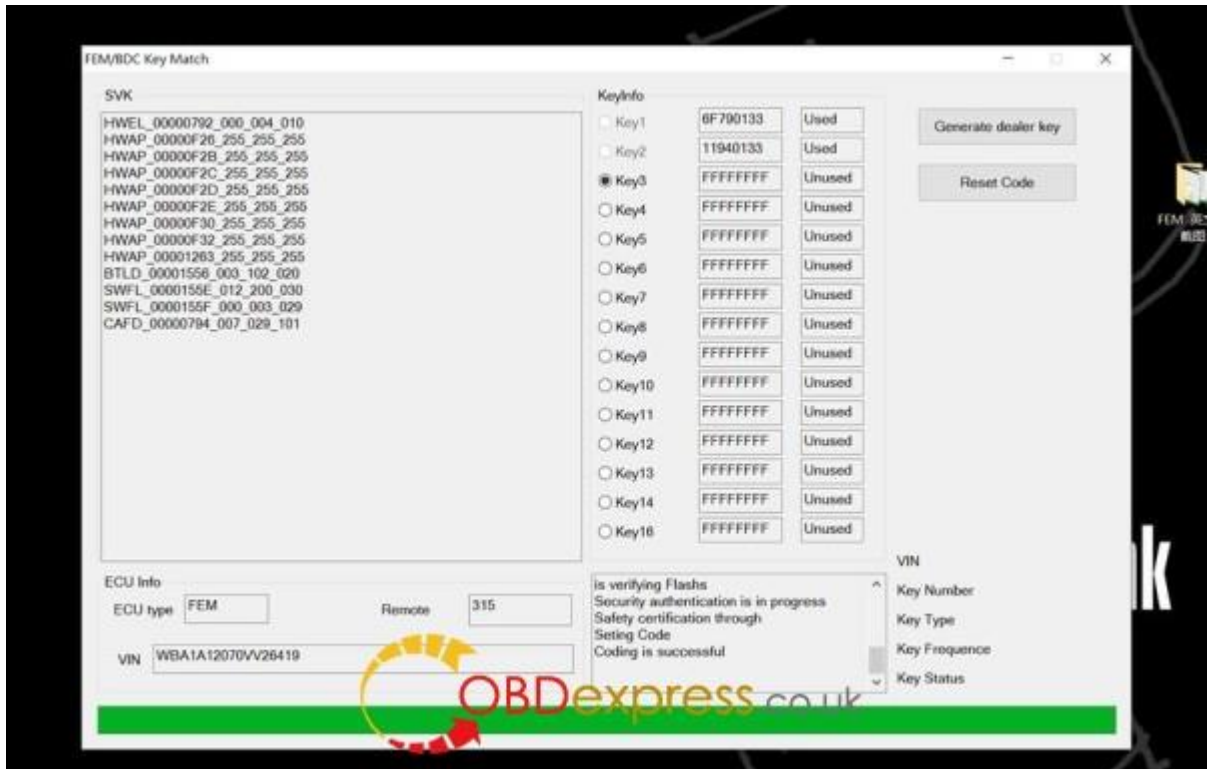
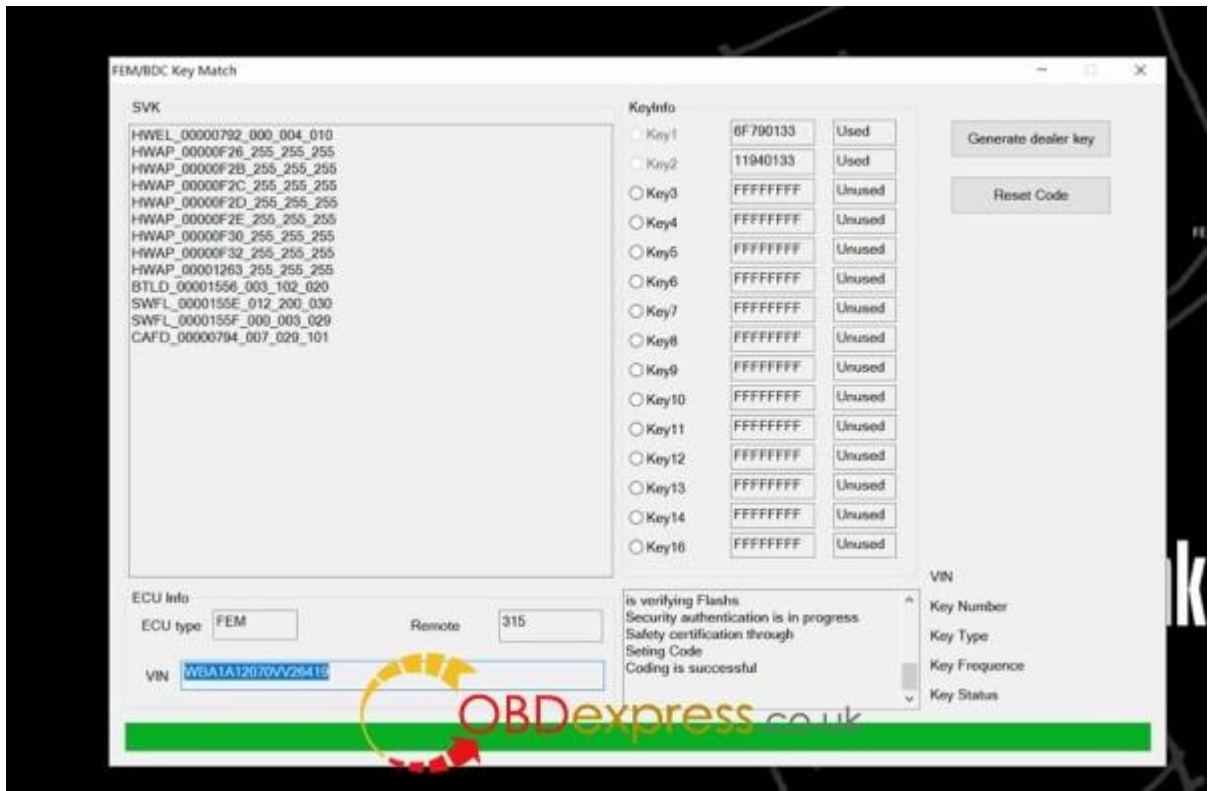


Please remove the FEM/BDC and then use the CGDI Prog programmer to read and save data from the P5XXX EEPROM chip on the FEM/BDC computer board, then click on Next

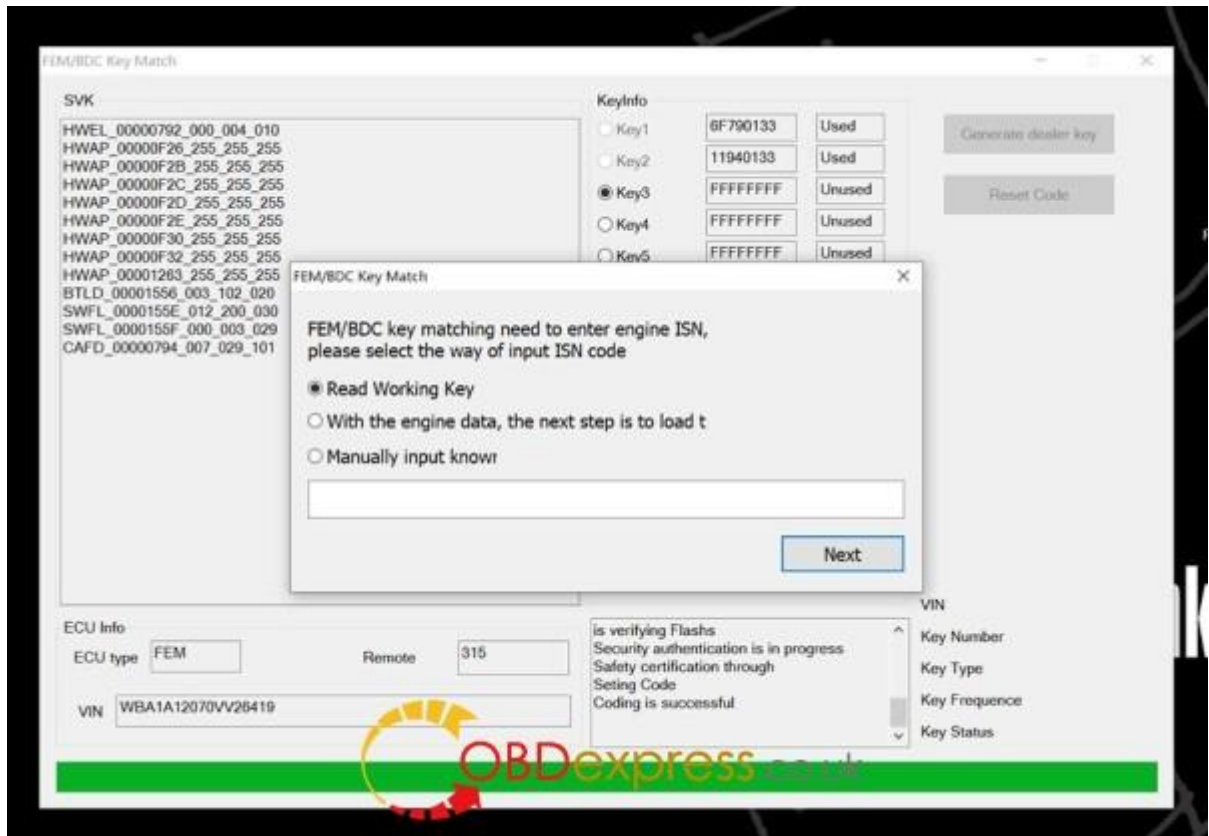


Setting code

Coding is successful



FEM/BDC key matching need to enter engine ISN, please select the way of input ISN code

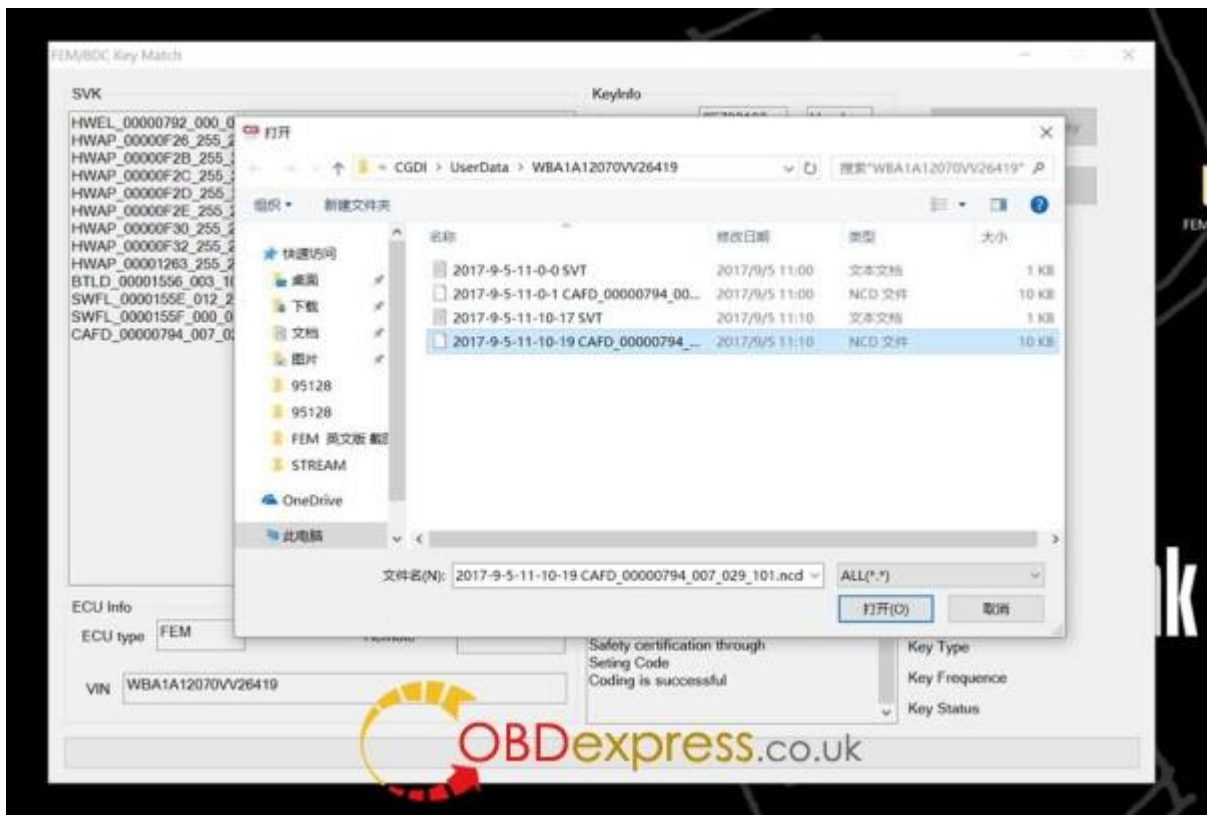


Connecting!!!

KWP-CAN 500kbps connection is successful



Loading the code data file





Coding is successful

<http://www.obdexpress.co.uk>