

iCard



User's Manual

(V1.0)

LAUNCH TECH. CO., LTD.

Launch Industrial Park, North of Wuhe Avenue, Banxuegang, Longgang, Shenzhen, Guangdong, P.R.China, 518129

Tel: +86-755-84528767

http://www.cnlaunch.com

Online shop: http://icard.cnlaunch.com

Thanks for your purchasing our products. Before operating, please carefully read the "Disclaimer" on the last page of this user's manual.

1. Introduction

iCard is a new state-of-the-art diagnostic product developed by LAUNCH, which can easily detect DTCs and monitor real-time dynamic data of your vehicle via wireless bluetooth communication with Android phone.

It supports Read & Clear DTCs, Read datastream, Read freeze frame and VIN, etc. It mainly consists of 2 parts: (See Fig.1-1)

- 1) iCard connected to the vehicle's DLC (to collect parameter data from vehicle while communicating with ECU);
- 2) Diagnostic software installed on Android phone.

It is compatible with all Android phones. When you use it for the first time, please download iCard diagnostic software from the website: <http://icard.cnlaunch.com> and then install it.

Please refer to "3. Installing & uninstalling diagnostic software" for more details.

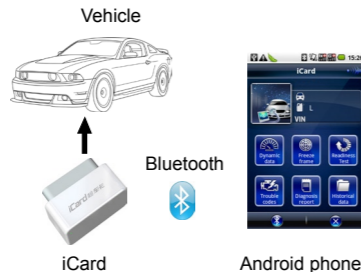


Fig.1-1 Product Structure Diagram

2. Connecting iCard

Follow the steps described as below:

- 1) Get iCard ready;
- 2) Locate vehicle's DLC socket: it provides standard 16 pins and is generally located on driver's side, about 12 inch away from the center of dashboard. See Fig.2-1. If DLC is not equipped under dashboard, an label indicating its position will be given. In case no DLC is found, please refer to Automobile Repair Manual.

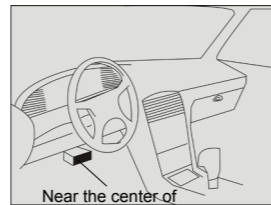


Fig.2-1 DLC Socket Location

- 3) Plug the iCard into DLC socket.

3. Installing & uninstalling diagnostic software

3.1. Installing

The following 2 ways are available:

A. Download and install it directly from Internet:
Visit <http://icard.cnlaunch.com> and click Download, a dialog box similar to Fig.3-2 will appear, click "install" button to proceed.

B. Manually install it from SD card:
Log in <http://icard.cnlaunch.com> to download

the software into the SD card of your phone. Remember the target folder and then do as follows:

- 1) Find the iCard.apk file saved in your SD card. See Fig.3-1.
- 2) Touch iCard.apk, the screen will appear as Fig.3-2, click "Install".

⚠ While installing, do NOT attempt to delete data or format SD card. Otherwise, the application may fail to run.

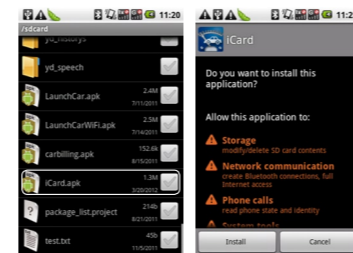


Fig.3-1

Fig.3-2

- 3) A progress bar will be shown on the screen, see Fig.3-3. After installation is complete, the screen appears as Fig.3-4:

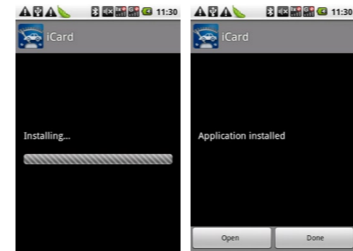


Fig.3-3

Fig.3-4

Click "Open" to run iCard application immediately (To run it, make sure that Bluetooth has been paired, otherwise no data will be obtained.);

Click "Done" to exit. An iCard icon will appear on the main menu of the phone.

3.2. Uninstalling

The method of uninstalling this software is same as that of uninstalling other phone applications. For details, please refer to user's manual for your phone.

4. Bluetooth Setting

To operate software, Bluetooth must be paired and then linked, or else you can not get any data.

1. Enter Bluetooth settings of your phone, turn on Bluetooth and scan for devices, the system will list out the search result. Click the desired device, see Fig.4-1.
2. A dialog box shown as Fig.4-2 will pop up on the screen, type default PIN 0000, and then click "OK" to start pairing.

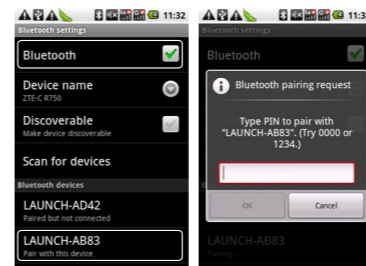



Fig.4-1

Fig.4-2

2. Touch iCard icon on the phone desktop to enter Fig.5.1 (For main menu function

description, refer to "5.1 Main Menu"). Click  on the bottom of the screen to enter Fig.4-3.

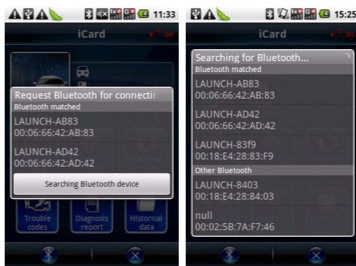


Fig.4-3

Fig.4-4

3. Touch the desired matched device shown in the box to connect. To search for other devices, click "Searching Bluetooth device", a search result list similar to Fig.4-4 will appear on the screen. Touch the desired one to proceed. The next time you activate it, the system will link automatically.

Note: After you set or change bluetooth pair, the system will reset automatically and enter the main menu.

5. Start Diagnosing

To make use of it correctly, please confirm that the following conditions are met:

- iCard has been properly connected;
- Vehicle has been energized or ignition has been turned on;
- The distance between phone and iCard should be kept within 10 meters;
- Bluetooth pair and connection has been done successfully.

5.1. Main Menu

After finishing Bluetooth connection, the system will enter the main menu screen. See Fig.5-1.

- 1 Bluetooth connection status: indicates Bluetooth is successfully connected.
- 2 Vehicle information display area: includes vehicle name, fuel tank volume and VIN. VIN can be obtained automatically once Bluetooth is paired.
- 3 Function options: 6 functions are included. For details, see the relevant chapter.
- 4 Exit: Click to close the application.
- 5 Bluetooth setting: Click it to enter setting screen.



Fig.5-1

5.2. Vehicle Information

A. Read Vehicle Information

Touch the vehicle icon close to vehicle information display area in Fig.5-1, it will enter a screen similar to Fig.5-2.

If part of information can not be read, click the input field and activate the on-screen keyboard to input, the system will save the data that you keyed.

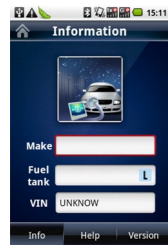


Fig.5-2

B. View Help

Click "Help" to view the help information or precautions on using this product, see Fig.5-3. Flick your finger on the screen to scroll more hidden content.

Tap to return to the main menu screen.



Fig.5-3

Fig.5-4

C. View Version

Click "Version" to view the version information on software and hardware. See Fig.5-4.

To upgrade firmware version, just tap "Update" to start.

To upgrade software version, tap "Update", it will download the latest version from Internet, then follow the on-screen instructions to install.

Tap to return to the main menu screen.

5.3. Dynamic Data

Tap the "Dynamic data" option in the main menu, a screen similar to Fig.5-5 will appear:



Fig.5-5

Fig.5-6

- * [New]: Create a new datastream group.
- [Delete]: Delete the current datastream group.
- [<]: Return to the previous screen.

Click the "New" button, Fig.5-6 will appear. Click one of 5 to enter datastream selection screen. See Fig.5-7. Tap the desired item (if not supported, a prompt box will pop up). Tap different buttons on the bottom of the screen to switch to different datastream.



Fig.5-7

Fig.5-8

Tap to return to the previous screen. Click "Save" to save data, the screen will display as Fig.5-9:



Fig.5-9

Fig.5-10

Fig.5-9 represents the current working condition data by means of instrument.

Click "coordinate", datastream will be displayed in coordinate form. See Fig.5-10. Tap to switch to the previous/next datastream.

5.4. Freeze Frame

When an emission-related fault occurs, certain vehicle conditions are recorded by the on-board computer. This information is referred to as freeze frame data. Freeze data is a snapshot of the operating conditions at the time of an emission-related fault.

Tap "Freeze frame" in the main menu to enter a screen similar to Fig.5-11:

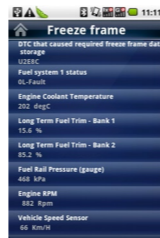


Fig.5-11

Tap to return to the main menu screen.

5.5. Readiness Test

This option allows you to view the readiness test status.

Tap "Readiness Test" in the main menu, the screen will appear as follows:



Fig.5-12

Readiness status definitions:

- OK: indicates it is supported and tested.
- INC: indicates it is supported, but test has not completed.
- N/A: means that the test is not applicable to this vehicle.

Tap to return to the main menu screen.

5.6. Trouble Codes

Trouble codes are codes that are stored by the on-board computer diagnostic system in response to a problem found in the vehicle. These codes identify a particular problem area and are intended to provide you with a guide as to where a fault might be occurring within a vehicle.

Tap "Trouble codes" in the main menu to enter a screen similar to Fig.5-13.

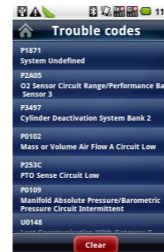


Fig.5-13

Click "Clear" to clear fault information.

Note: Performing Clear operation only erases some incidental fault. For permanent fault, it can not be cleared until it is fixed.

5.7. Diagnosis Report

This option enables you to view diagnosis report, which provides important reference for repair personnels to further judge fault type more accurately.

In the main menu, tap "Diagnosis report", a screen similar to Fig.5-14 will appear.

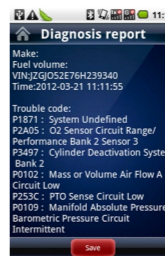


Fig.5-14

Click "Save" to store it.

Tap to return to the main menu screen.

5.8. Historical Data

This item is used to display a list of historical working condition data.

In the main menu, tap "Historical data" to enter a screen similar to Fig.5-15.

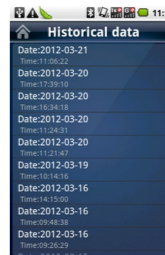


Fig.5-15

Tap to return to the main menu screen.

Disclaimer:

While using this product, please pay more attention to the following:

- Follow instructions to install iCard into your vehicle before using.
- While you are driving a car, do not attempt to operate this product, so as to avoid distraction and traffic hazard; The company assumes no responsibilities for any traffic accident or economic loss resulting from operating it while driving.
- This product collects and sends data via Bluetooth communication. Avoid using this product near a place with strong electromagnetic interference to ensure a normal transmission.
- The company is not liable for any direct or indirect damage caused by altering or replacing all kinds of parts or components without authorization.
- Any problem related to this product should be solved by our professional technical personnels. The company has the obligation to make some repair or replacements to this product according to the actual conditions.

This user manual is subject to change without prior notice due to continuous innovation.