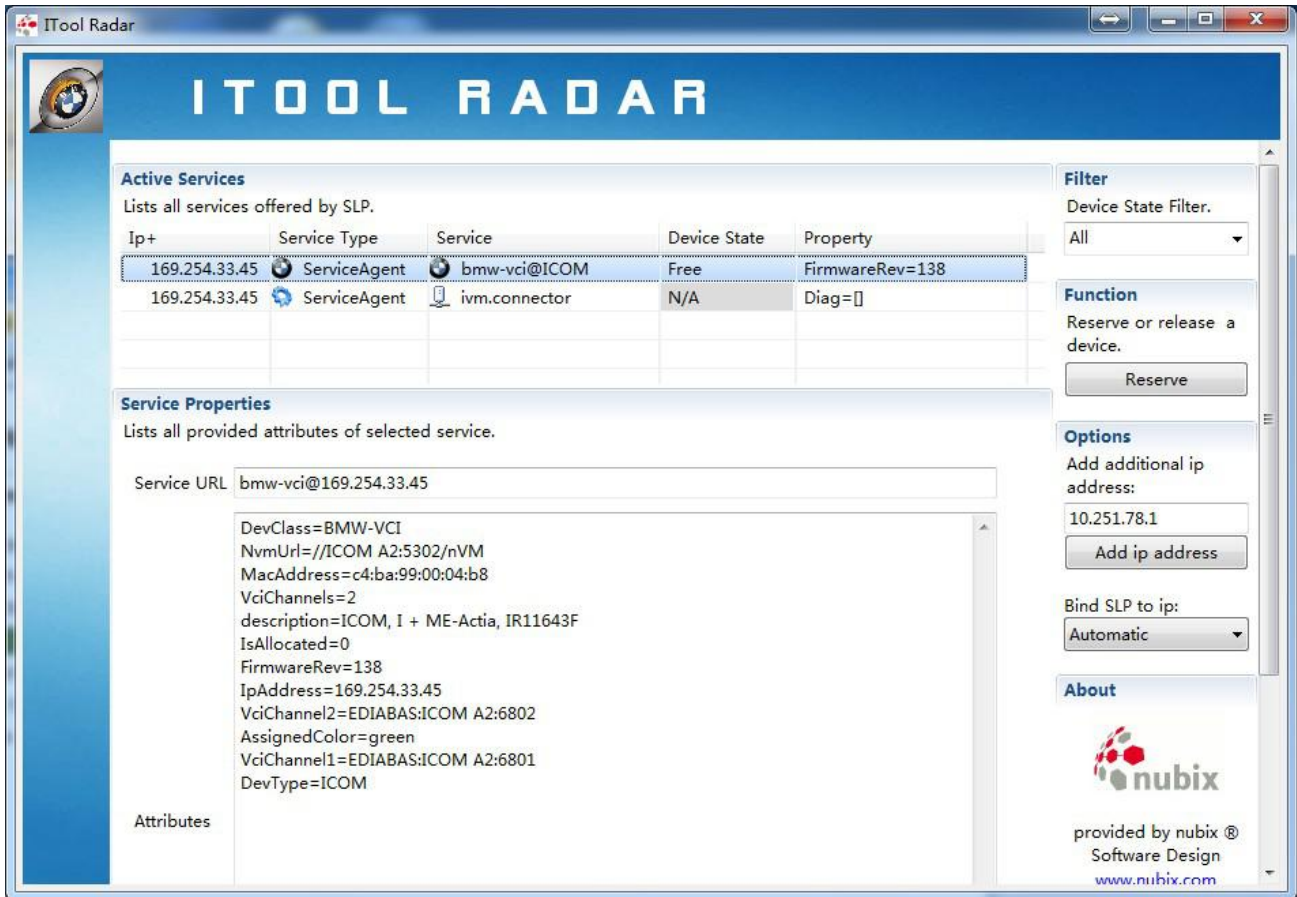


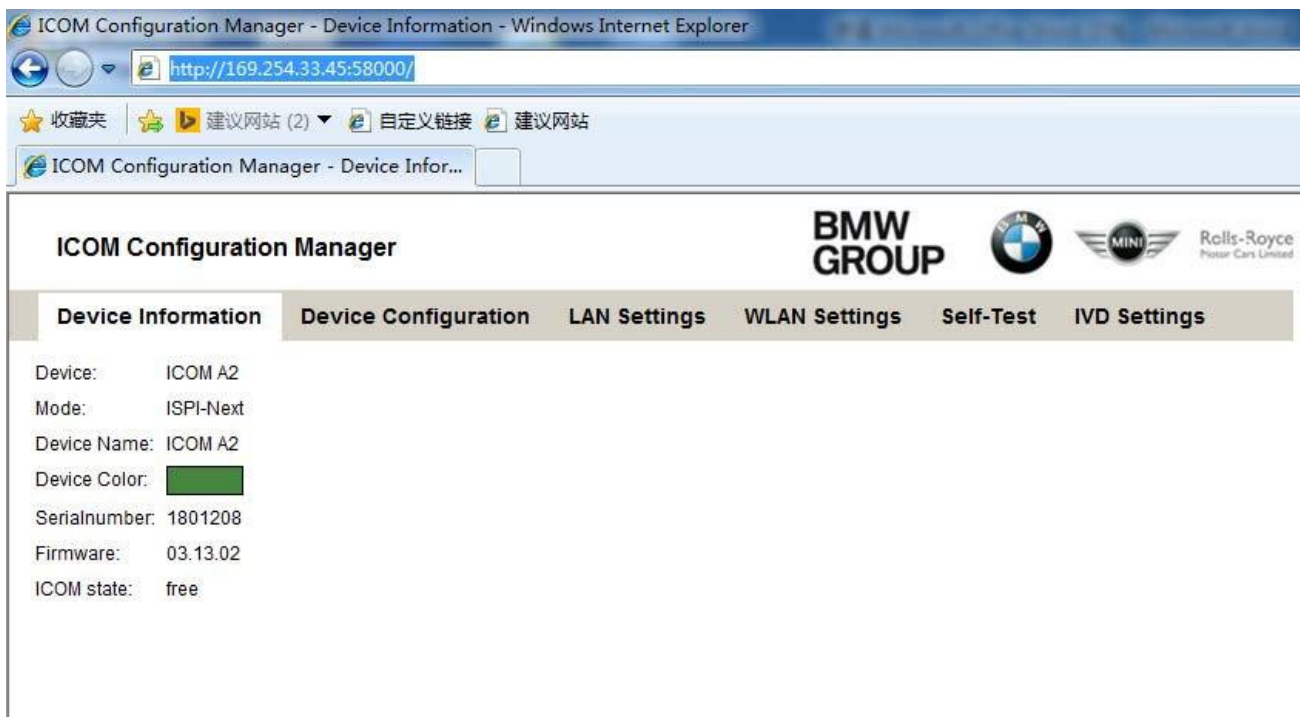
ICOM WLAN configuration

1. Open ITool Radar to identify ICOM information

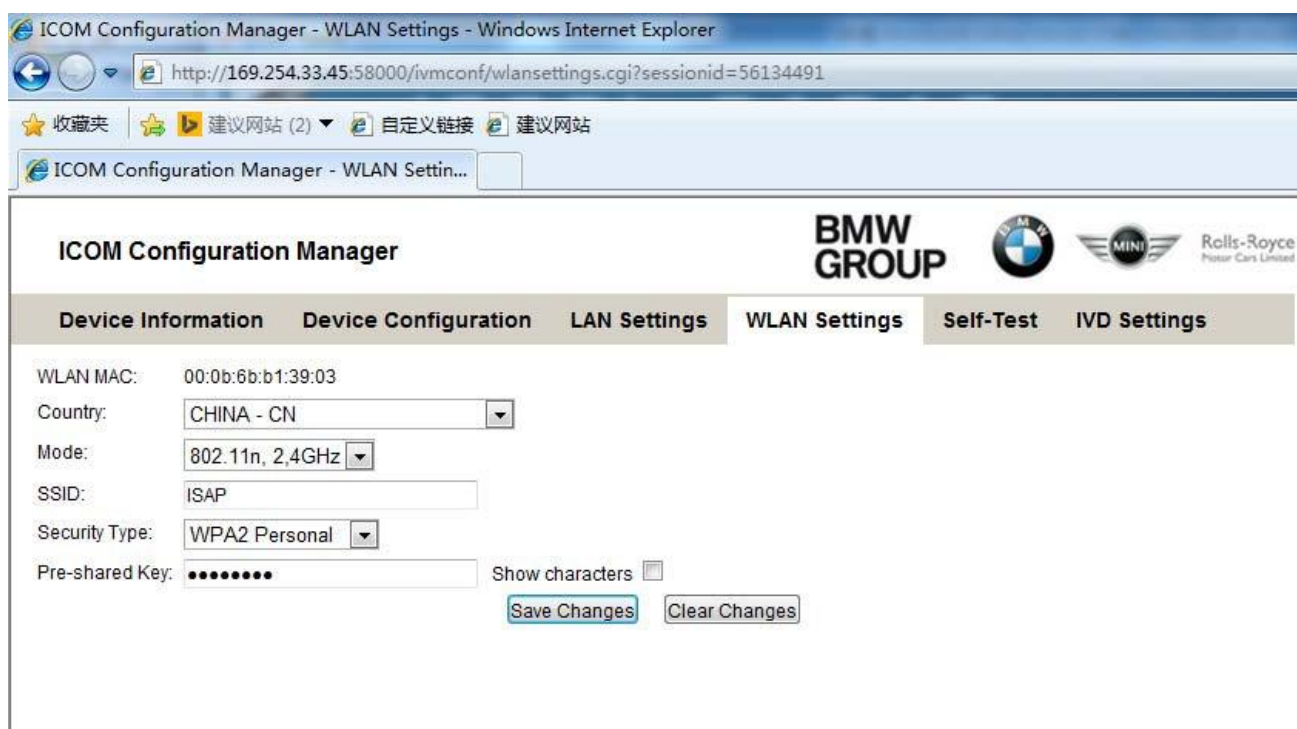


2. Open IE and enter the ICOM configuration URL: (ICOM's IP address is subject to actual reading)

http://169.254.33.45:58000/



3. Select WLAN Settings, and press the available WIFI information corresponding to the input, after confirming that it is correct, click Save Changes to save the settings



4. Disconnect the network cable and power off to restart ICOM. After ICOM starts, it will automatically connect to WIFI.

5. . If using our software and USB-WIFI, the configuration information is Mode:
802.11n, 2.4GHz

SSID:ISAP

Security Type: WPA2 Personal Pre-
shared Key: BmwAp24h