

How to activate the benz star software?

You can follow the following instruction step by step (OBD2express.co.uk):

This is the activation way for internal hdd, not for external hdd. For external hdd, please see the video on our website.

When you activate the software, please give us the following information you get:

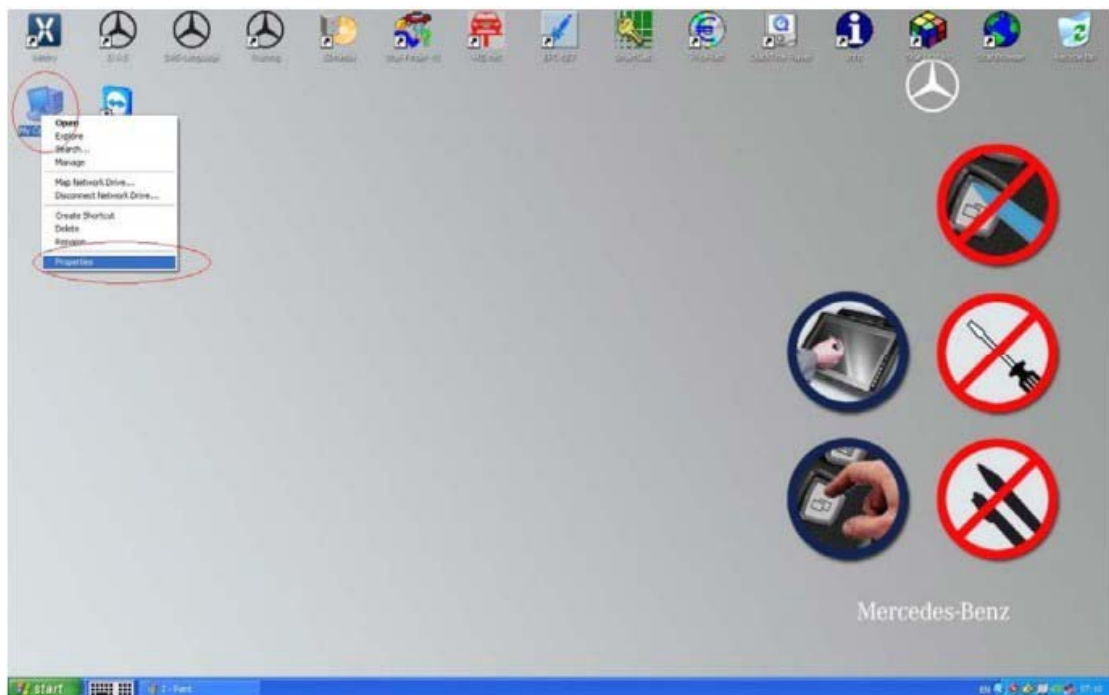
Hardware fingerprint: (such as 1B4F-A848)

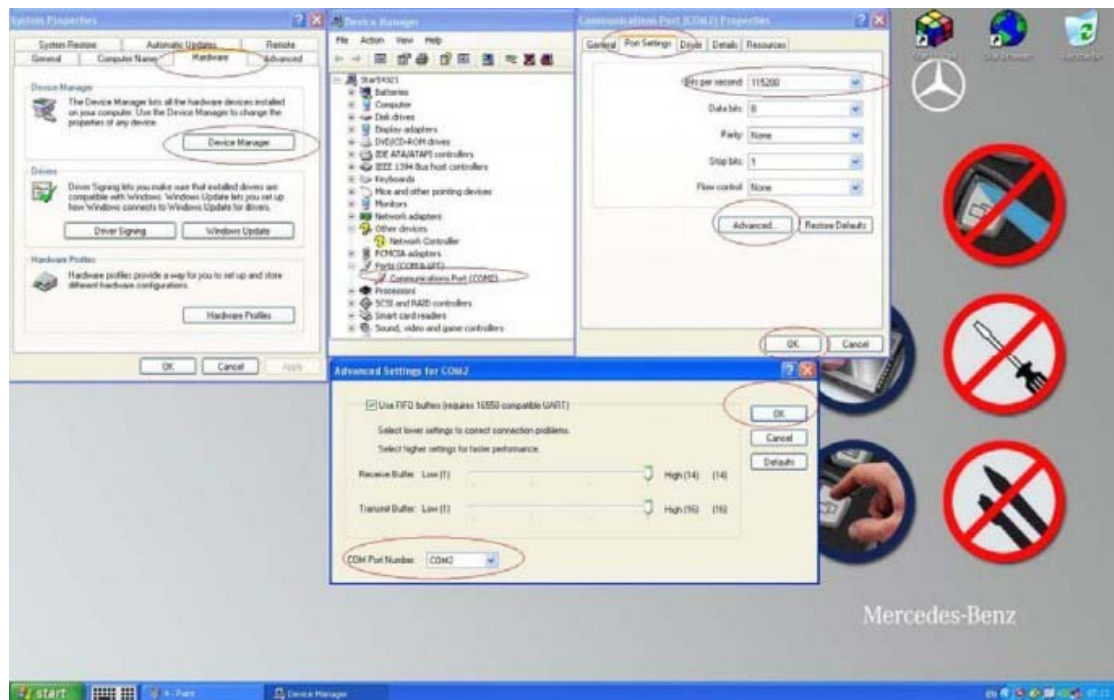
LAN ID: (such as 324577A7D7F0)

HW-ID: (such as 45F659C0A24B)

APP-ID: (such as 252)

1) configure your COM port (configurez votre port COM)

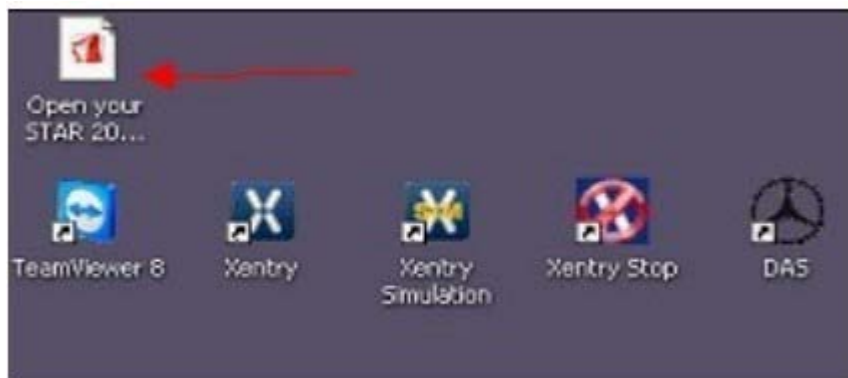




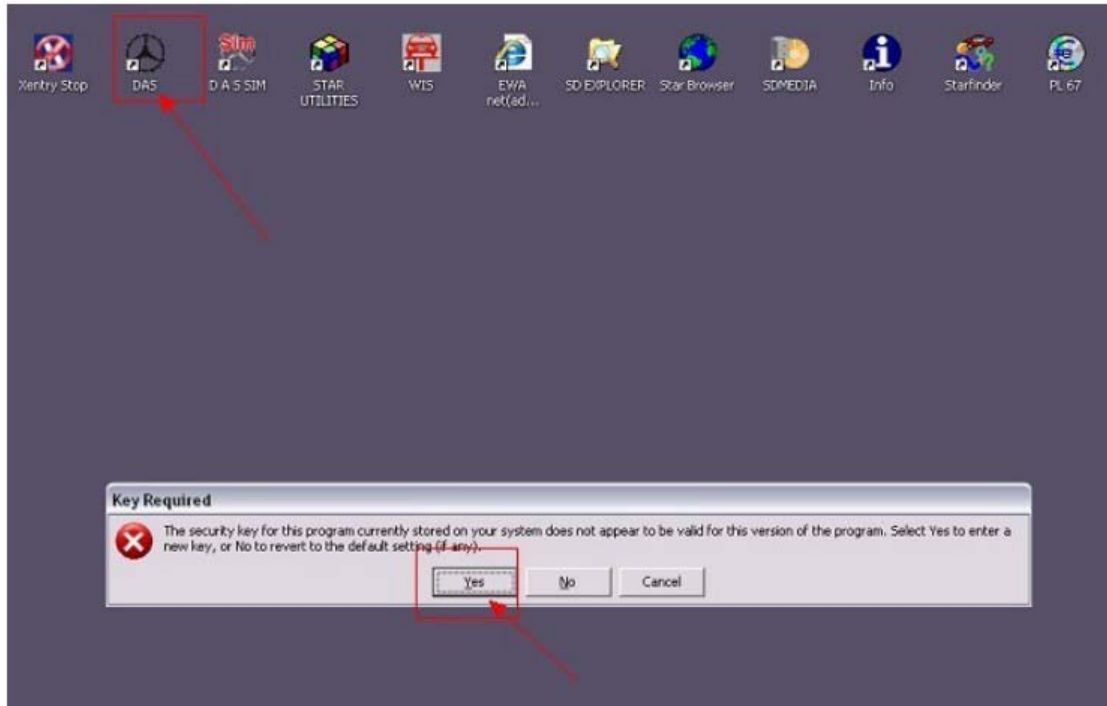
COM 2 115200

There is the PDF on the table, you can follow it to activate the software:

(il y à PDF document dans le logiciel, vous pouvez regarder)



Open DAS software, then it will give you a prompt, click yes. (lancer DAS logiciel, il nous indique l'activation, cliquer sur oui)



Then It will gives you the information: Hardware fingerprint(Nous donnez ce numero Hardware fingerprint)



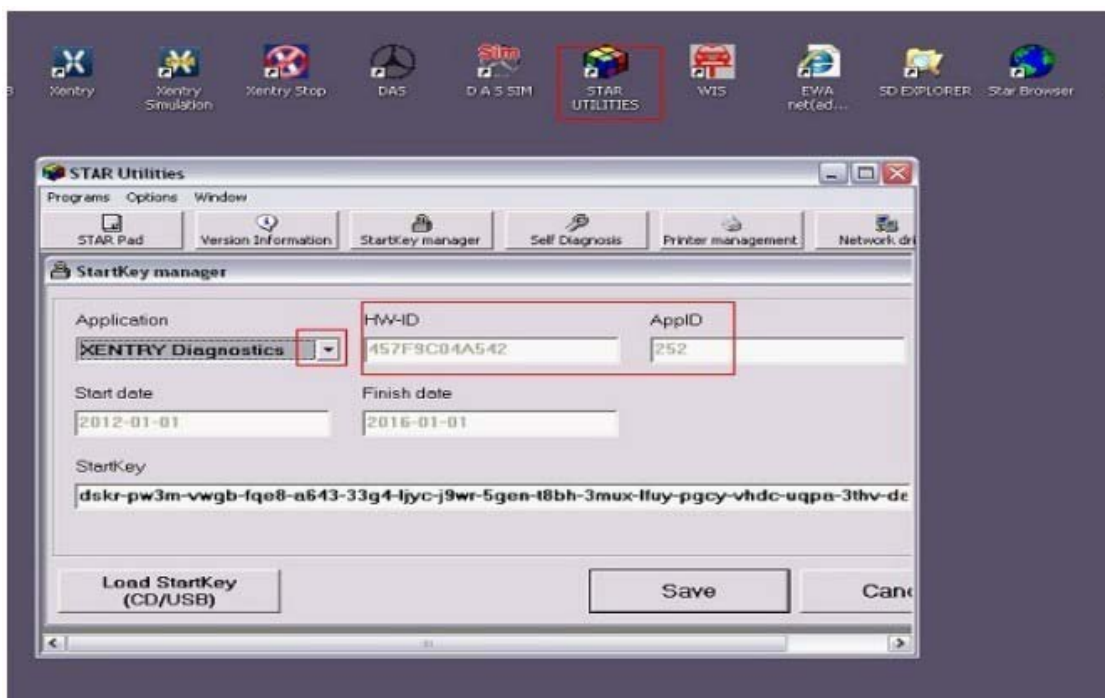
We will calculate the key, you enter this key to activate.(Nous allons calculer le key, vous entrez ce key pour activer.)

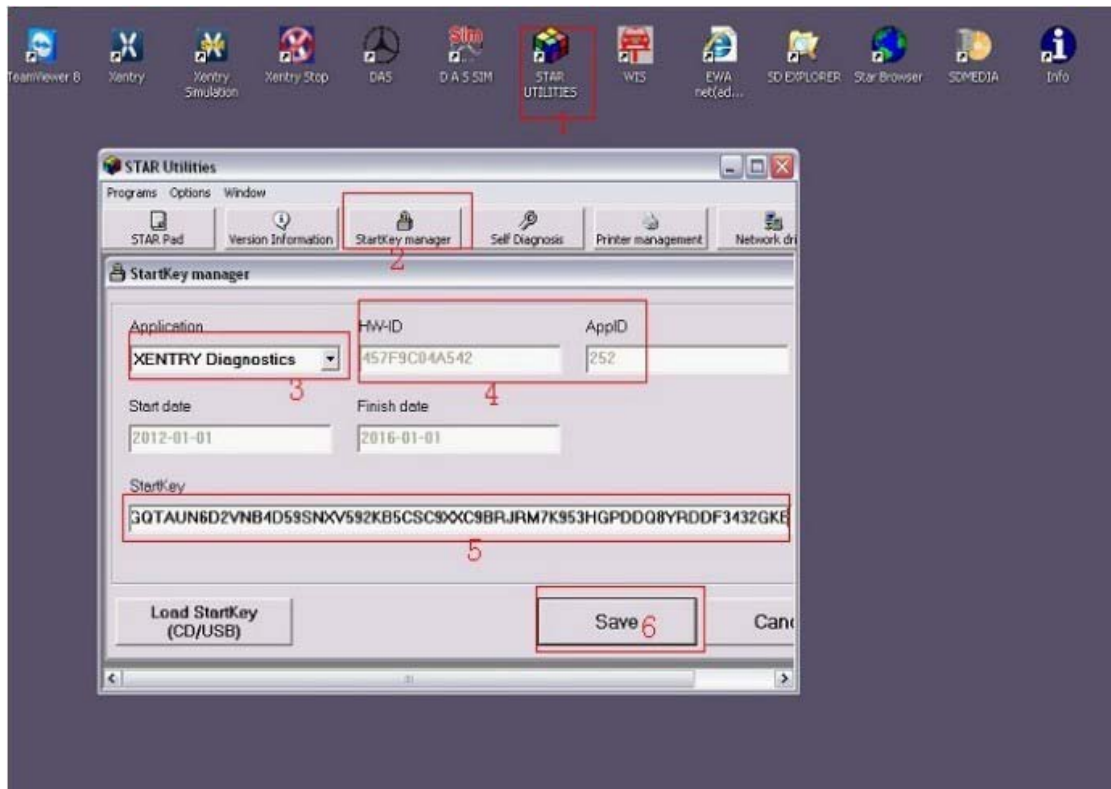


launch star utilities, activate xentry (lancer star utilities, activer xentry) obd2express.co.uk

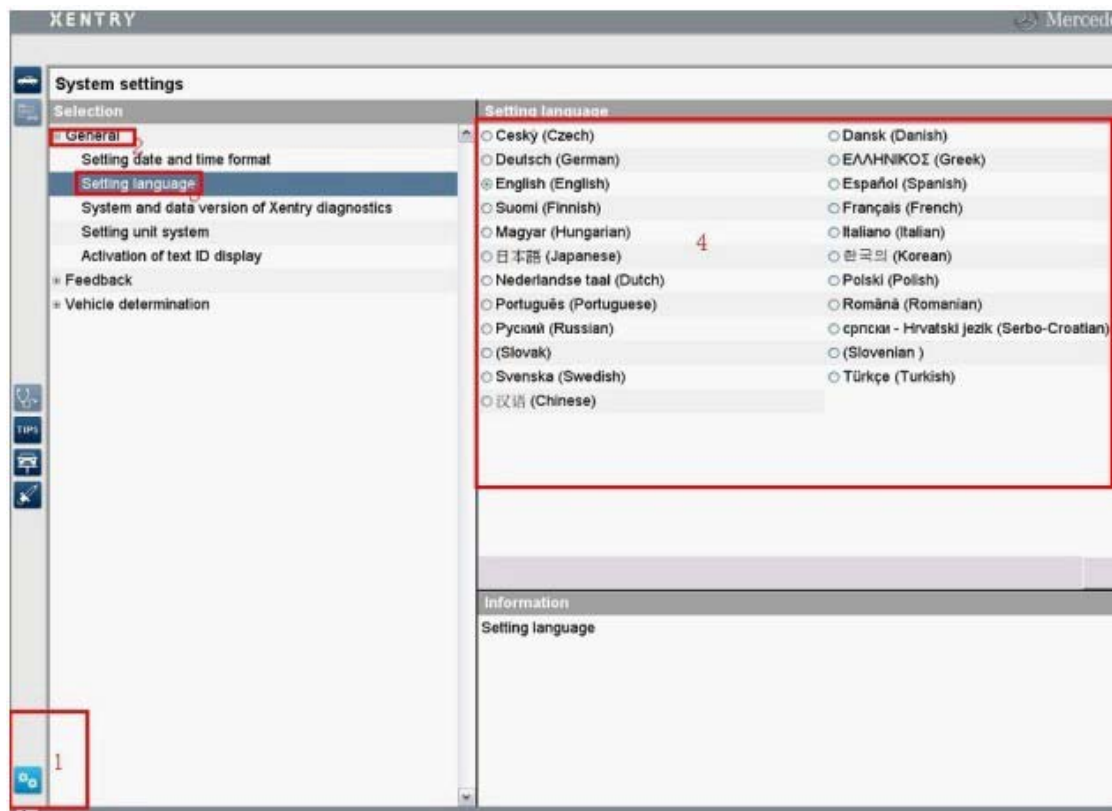
Then you will get HWID&APPID, and you need to send this to us, we will give you another key information.

(ii faut que nous donner HWID&APPID, nous vous redonner kes keys)



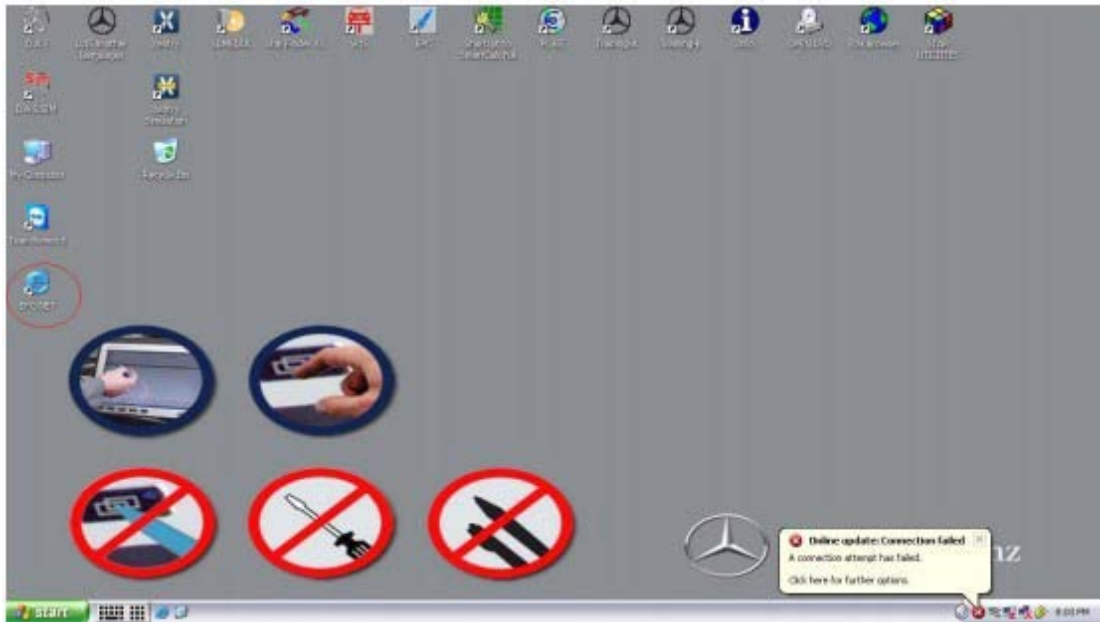


how to change the language das xentry
(comment modifier la langue das xentry)

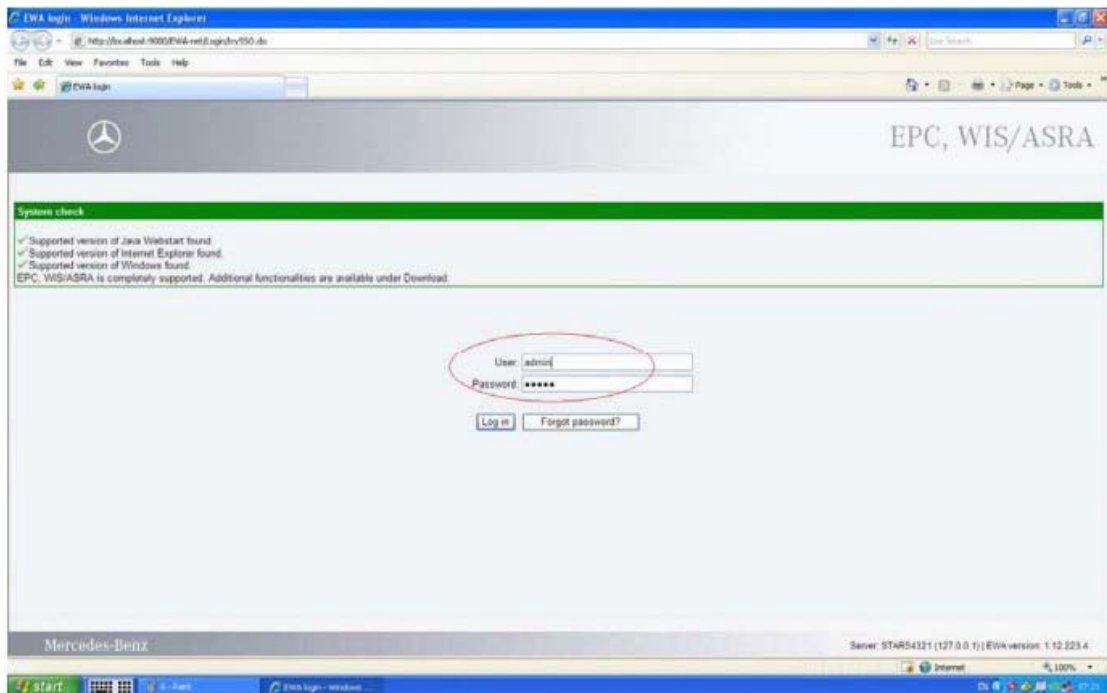


Wis and Epc activate (Epc et Wis activer)

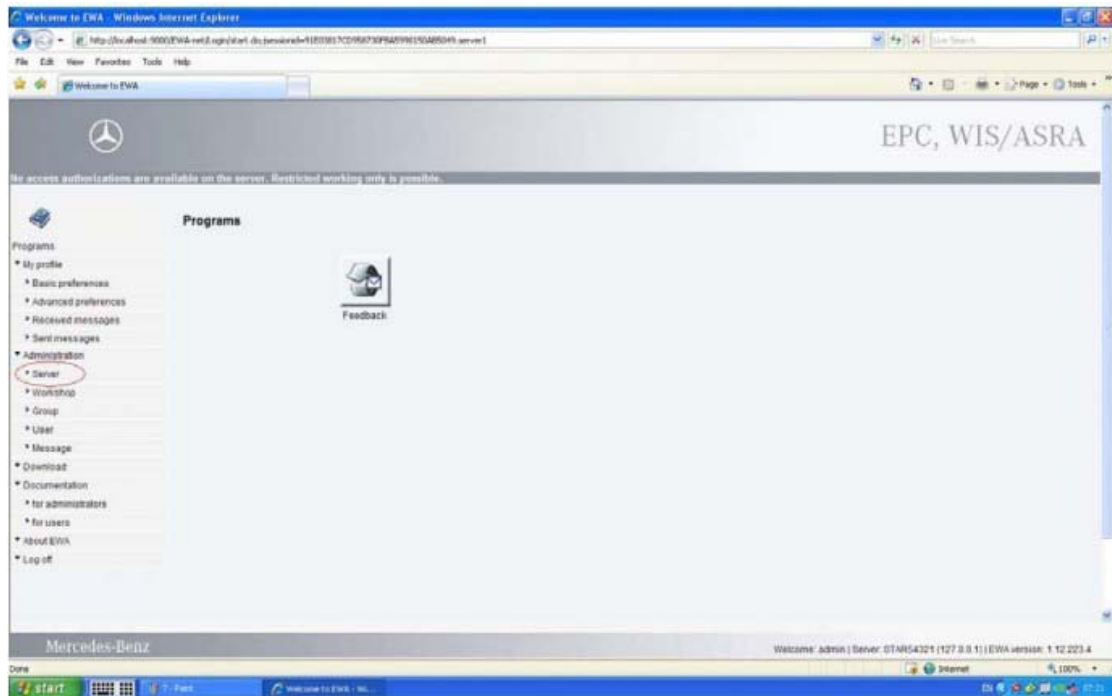
Open EPC-NET



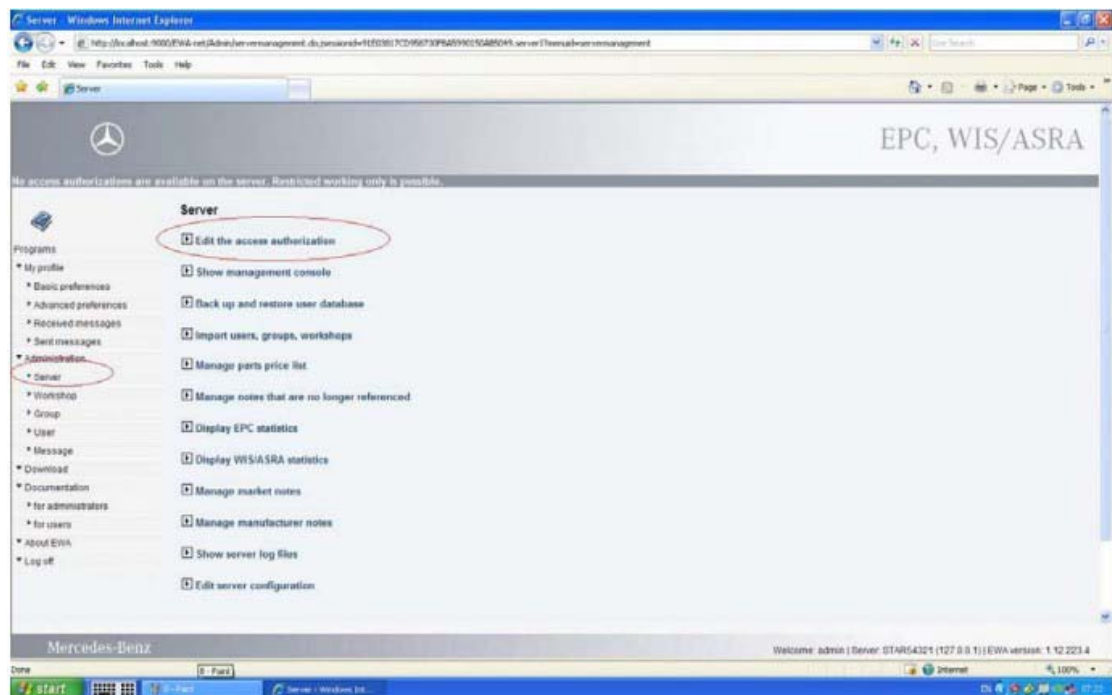
User: admin password; 12345



Open Server (Ouvrir Server)



Choose Edit the access authorization (Ouvrir Edit the access authorization)



Send your LAN ID to us(Nous envoyer votre LAN-ID)

We will give you the new StartKey (Nous allons vous donner les nouveau StartKey)

